



GovTech & GovTech Lab

What is GovTech and how do we
engage with it?



GOVTECHLAB

Lithuania -
a strong digital nation.

**but technology is
moving fast.**

**but technology is
moving fast.**

**and the citizens'
expectations are rising.**

**how do we bring this
constant force of innovation
to the public sector?**

**how do we bring this
constant force of innovation
to the public sector?**

**exploratory
innovation**

**exploratory
innovation**

**skills, expertise and ideas
from entrepreneurs**

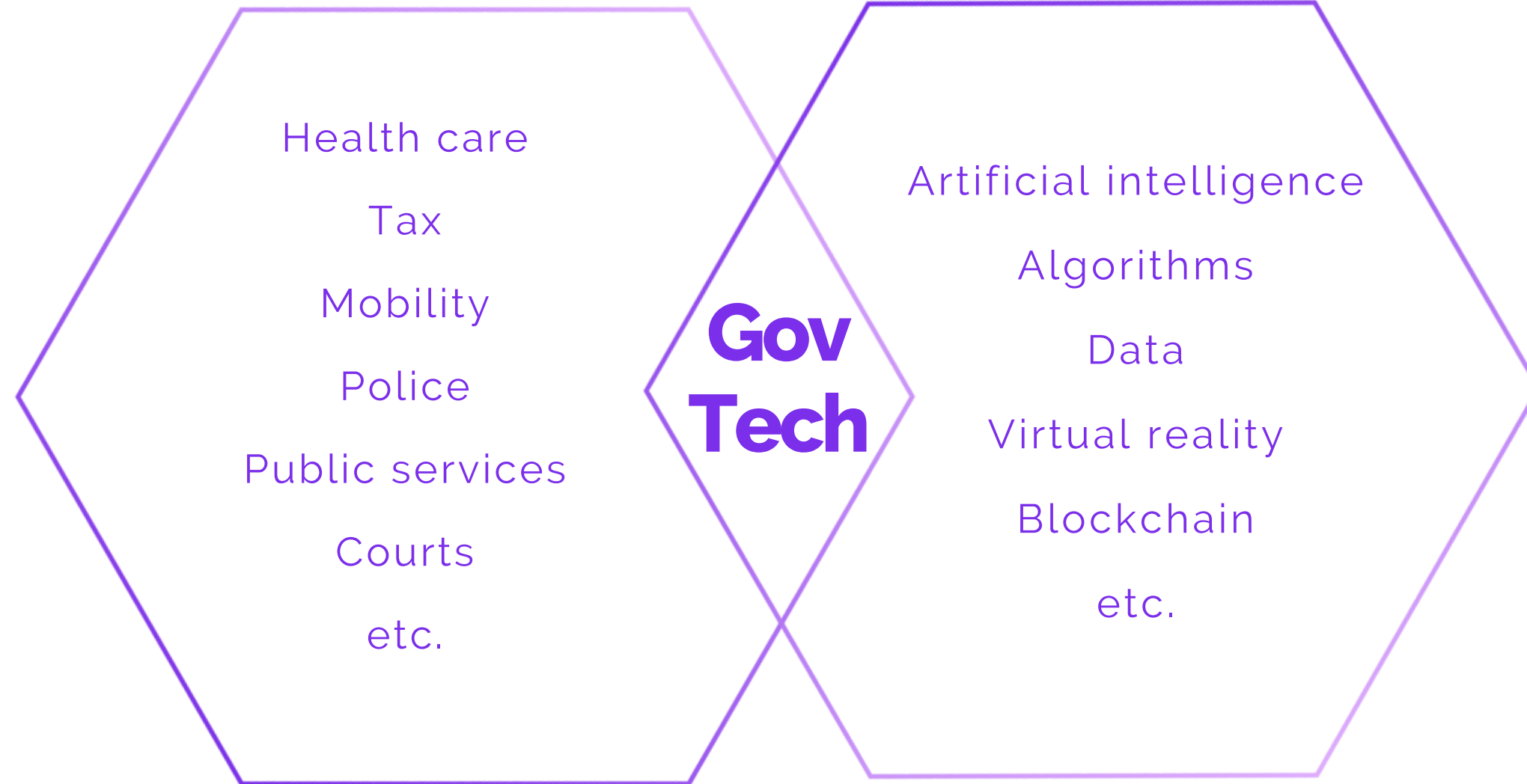
Public sector

Health care
Tax
Mobility
Police
Public services
Courts
etc.

Technologies

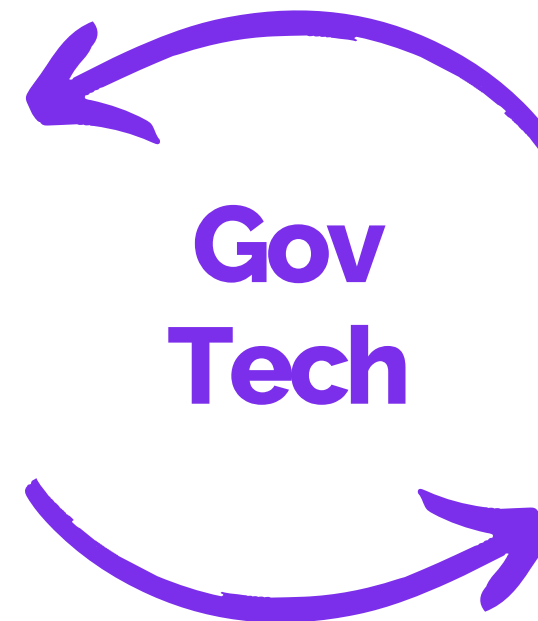
Artificial intelligence
Algorithms
Data
Virtual reality
Blockchain
etc.

**Gov
Tech**



Innovation creators

startups
companies
academia
NGO
etc

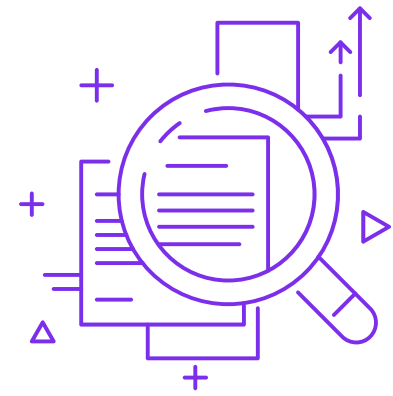


Public sector

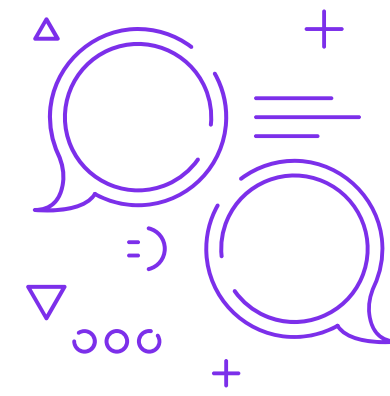
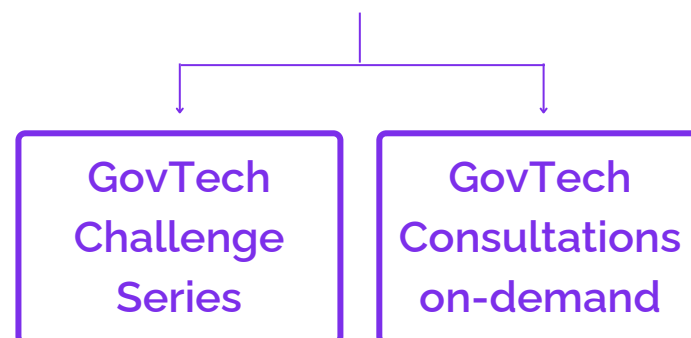
national gov
municipalities
agencies
hospitals
schools, etc.

**That's why in Lithuania we
built a GovTech Lab**

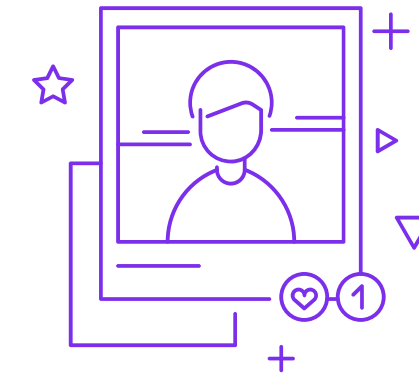
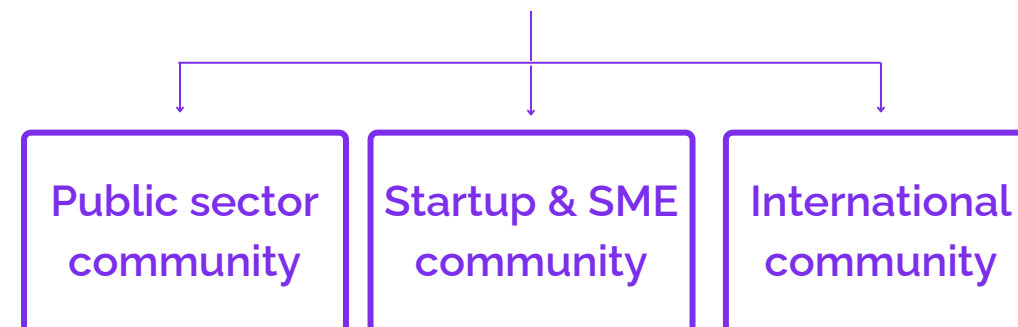
GovTech Lab



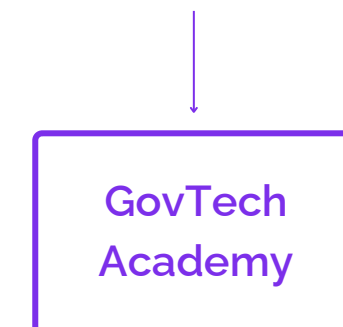
GovTech challenge coordination and consultations



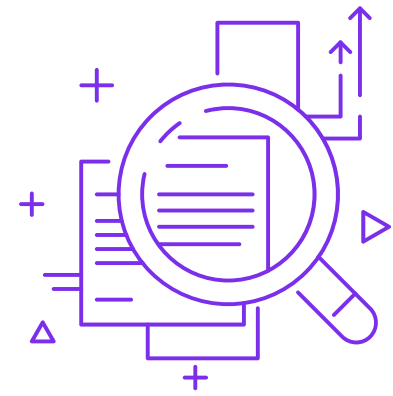
GovTech ecosystem and community building



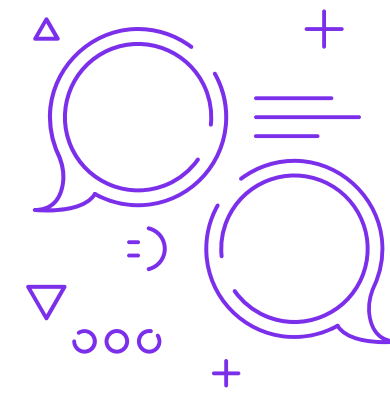
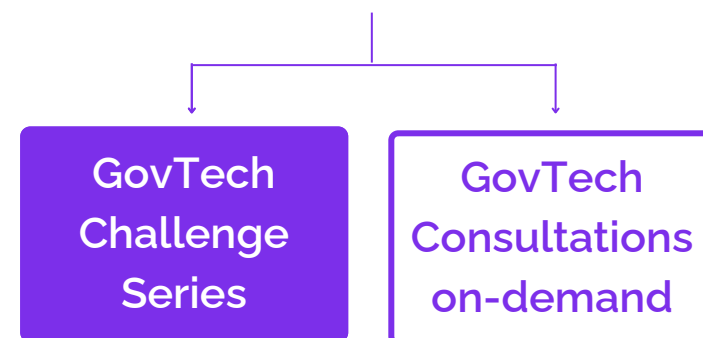
Increasing public sector innovation skills



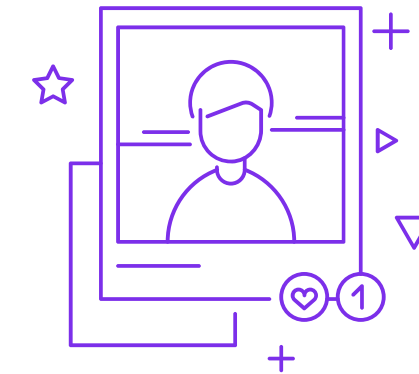
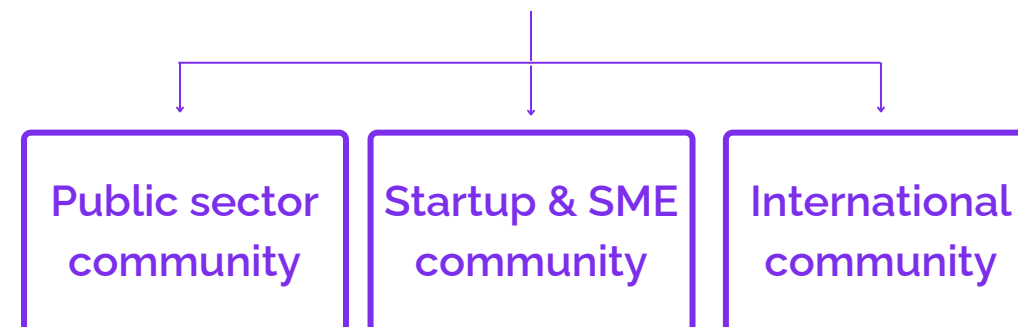
GovTech Lab



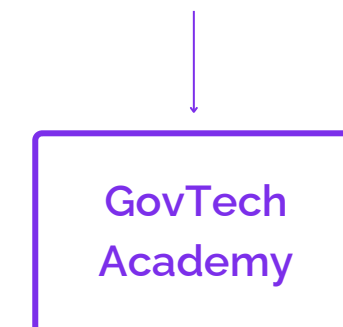
GovTech challenge coordination and consultations



GovTech ecosystem and community building



Increasing public sector innovation skills



GovTech Challenge Series



// Stage 1

**CHALLENGE
SELECTION &
DEFINITION**

// Stage 2

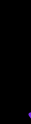
**TEAM & IDEA
SELECTION**

// Stage 3

**PILOT DEVE-
LOPMENT**

// Stage 4

**DEMO &
SCALING**



structured
co-creation
programme

challenge examples:



Making the internet safer for children by automatically detecting illegal content - children abuse material



Integrated forest cover monitoring using advanced algorithms



Solution to automate data collection from market participants necessary for supervision

statistics:

278

challenges
submitted

72

challenges
selected

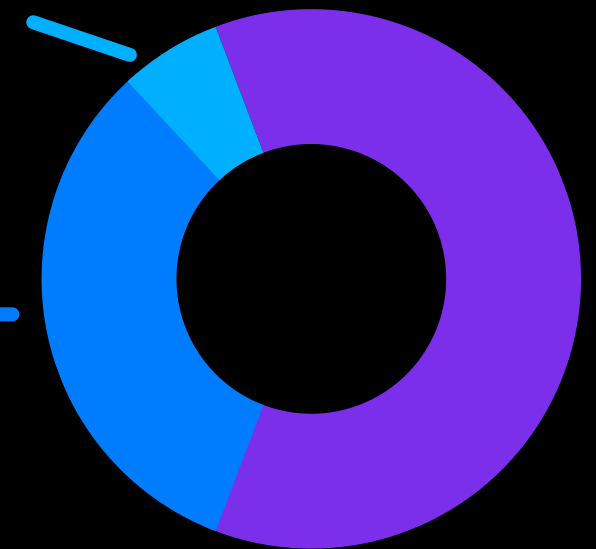
51

organisations

6% Data-driven policy making

32% Better services for
businesses and citizens

62% More efficient operations



what's next:

- 01** GovTech Challenge Series on a European level via GovTech incubator
- 02** More challenges via public procurement
- 03** More focus on skills

Thanks.

Arūnė Matelytė

Manager of GovTech Lab @ Innovation Agency Lithuania



GOVTECHLAB

