

## About ENAIBLER

ENAIBLER brings together 9 partners from 6 EU regions, including regional and local authorities responsible for policy instruments, development agencies, and a university.

Our project aims to drive the digital transformation of these regions through the strategic utilization of Artificial Intelligence (AI).

MAR 2023

MAY 2027



1,84 M  
EU FUNDING



SMART

## Contact

**Margaret Quinn**

271@ CoLab, Donegal Campus  
Atlantic Technological University  
Letterkenny, Co. Donegal, F92 HTW7  
Ireland

Tel: +353 74 916 8212  
margaret.quinn@ernact.eu

Join us in **unlocking the power of AI** for your city or region!



RÉGION  
BOURGOGNE  
FRANCHE  
COMTE



Comhairle Contae  
Dhún na nGall  
Donegal County Council



OPOLSKIE CENTRUM  
ROZWOJU GOSPODARKI



Skellefteå  
kommun



UMEÅ  
UNIVERSITY

donostiasustapena  
fomentosansebastián  
DESARROLLO ECONÓMICO DE SAN SEBASTIÁN  
CONSEJO REGULADOR ECONOMÍA  
SAN SEBASTIÁN ECONOMIC DEVELOPMENT



RCR  
BANAT  
REGIONAL AGENCY FOR  
SOCIO-ECONOMIC DEVELOPMENT

[www.interregeurope.eu/ENAIBLER](http://www.interregeurope.eu/ENAIBLER)

@ENAIBLER  

Interreg  
Europe



Co-funded by  
the European Union

ENAIBLER

Enabling AI-driven  
public sector



@ENAIBLER  

## ► Project Objectives

- **Support adoption of AI by public sector:** Empower to implement AI for improved public services.
- **Capacity Building:** Build the capacity of public sector organisations to harness AI benefits with ethical considerations.
- **Promoting AI Adoption:** Empower the public sector as early adopters and promoters of AI-driven solutions.
- **Openness, Transparency, and Ethics:** Assist the public sector in implementing open, transparent, and ethical policies and services.



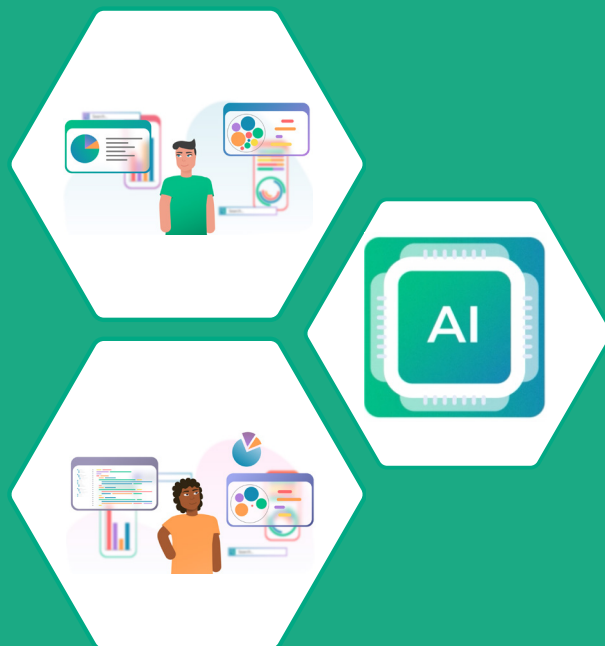
## ► Main Outputs and Results

Improved Policy Instruments:

Enhance five policy instruments to align with AI opportunities.

## ► Benefits

ENAIBLER promotes AI-driven services and policies that benefit citizens, companies, research organisations, and the public sector itself.



## ► Approach

1. **Regional Stakeholder Groups:** Collaborate with public sector organisations, AI solution leaders, and expertise providers.
2. **Inter-Regional Learning:** Exchange knowledge, Good Practices, and host workshops on AI capabilities, ethics, and transparency.
3. **Analyzing AI Context:** Gain insights into best practices and improve policies through partner analysis.



Scan to find out more about ENAIBLER



@ENAIBLER

