

**Interreg
Europe**



Co-funded by
the European Union

REFOCUS

Project overview

|

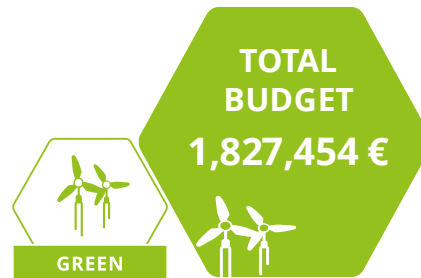
REFOCUS in a nutshell

www.interregeurope.eu/REFOCUS

The project REFOCUS is implemented in the framework of the Interreg Europe programme and co-financed by the European Union.

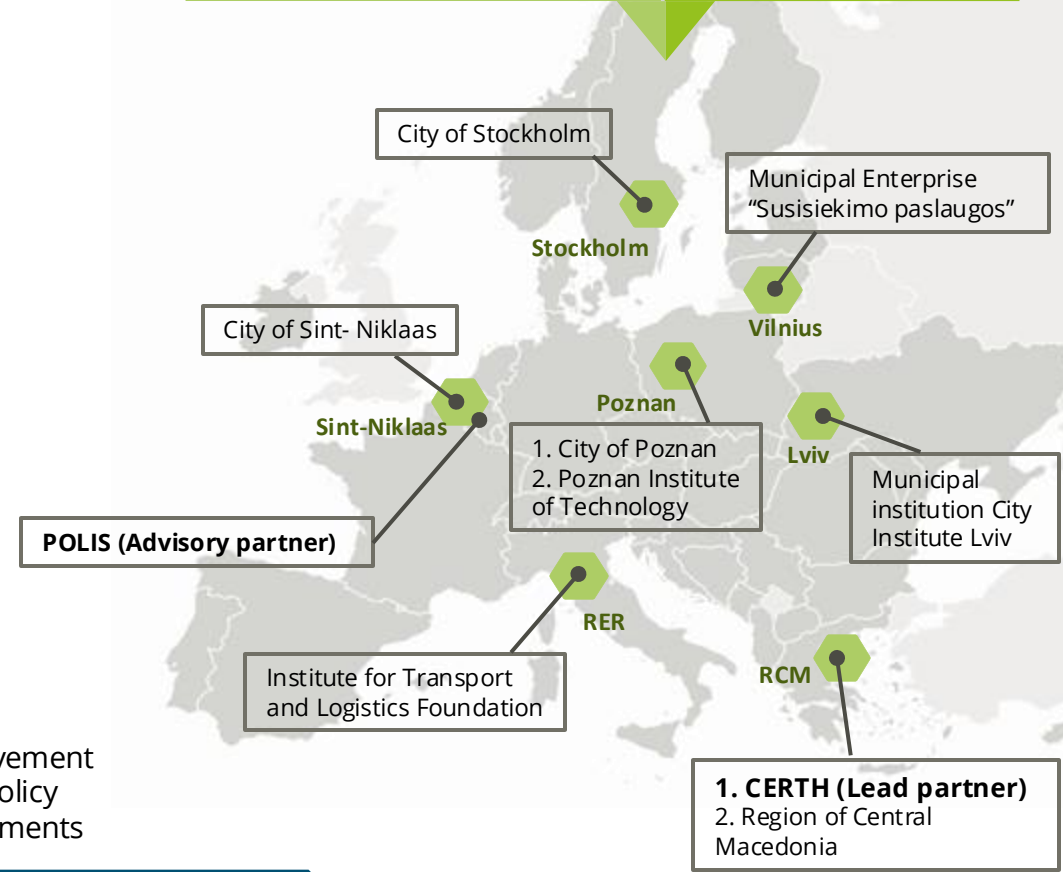
Objective

Support local and regional Sustainable Urban Mobility (SUM) planning, with data-driven and inclusive methodologies and tools.



Will exchange knowledge on data-driven approaches that support sustainable mobility interventions

10 Partners > **7** Cities & Regions



March 2027

REFOCUS philosophy...

..follows IR-E programme objective:

“To improve the implementation of regional development policies, by promoting the exchange of experiences, innovative approaches, and capacity building in relation to the identification, dissemination and transfer of good practices among regional* policy actors”*

*The term “region” refers to any territory represented by a public authority. It can relate to different administrative levels (i.e. municipality, city, county, region, country)

REFOCUS Policy Instruments

N o.	Policy Instrument	Policy responsible partner	Associated policy authorities	Investment for Jobs and Growth programme
1	Regional programme 2021-2027 Central Macedonia	Region of Central Macedonia	N/A	Yes
2	Sustainable Urban Mobility Plan for City of Poznan	City of Poznan	N/A	No
3	Emilia-Romagna Regional Operational Programme ERDF 2021-2027	ITL	Emilia-Romagna Region	Yes
4	Climate Action Plan for the City of Stockholm	City of Stockholm	N/A	No
5	Sustainable Urban Mobility Plan for Vilnius	Municipal Enterprise "Susisiekimo paslaugos"	Vilnius City Municipality	No
6	Sustainable Urban Mobility Plan for the city of Sint-Niklaas	City of Sint-Niklaas	N/A	No
7	Sustainable urban mobility plan (Lviv)	Municipal institution City Institute Lviv	Lviv City Council	No

REFOCUS intervention logic

Programme's levels of learning

Improved policies

Increase capacity of organizations (organizational learning)

Increase capacity of people (individual learning)

Interregional exchange of experience process

REFOCUS intervention logic

Policies in sustainable mobility planning/ implementation **improved with the integration of inclusive & data driven tools for decision making**

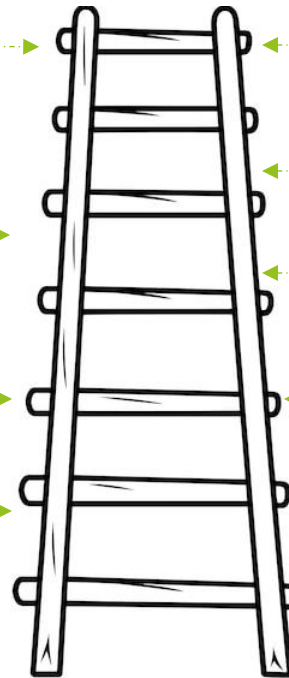
Implementation of actions for **Policy Instrument** improvement

Co-creation of actions for **Policy Instrument** improvement

Exchange of experience taking place (i.e. study visits, co-creation workshops, etc.)

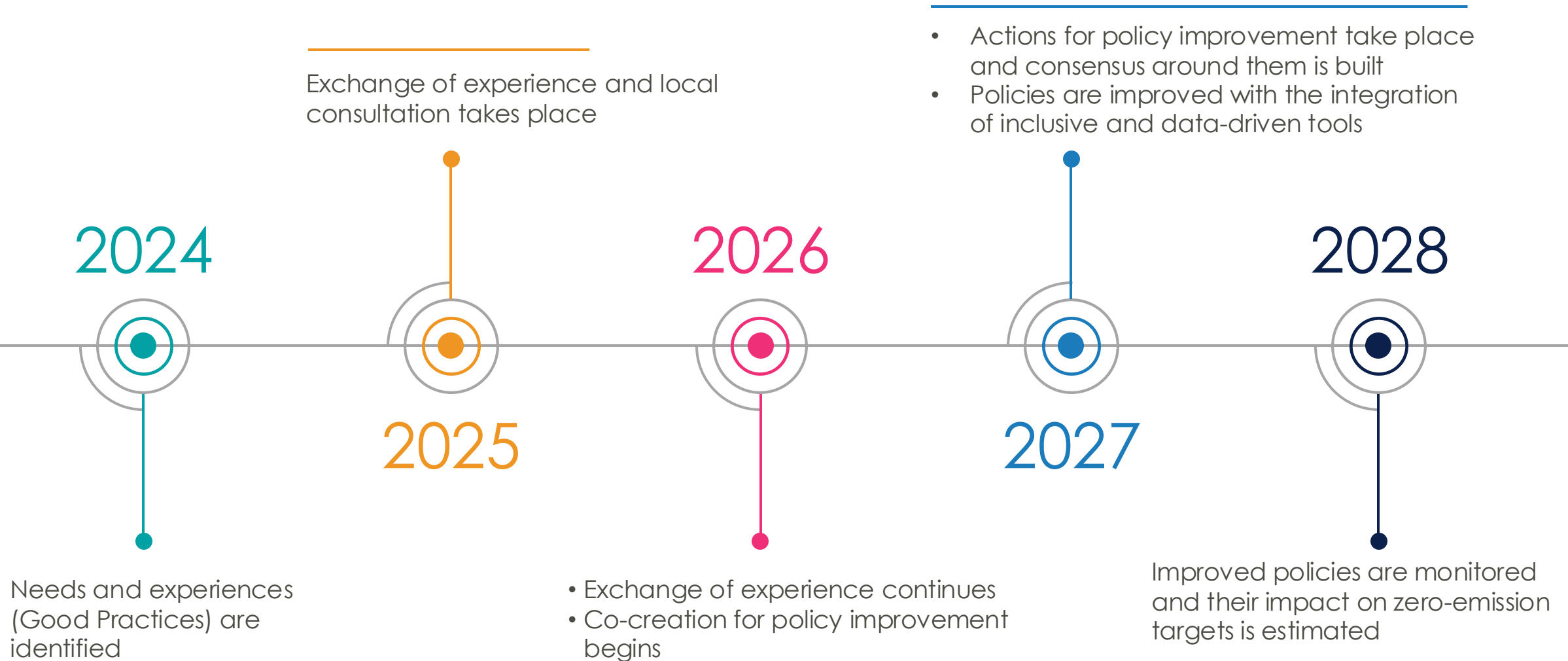
Experience identified (**good practices**)

Needs assessment

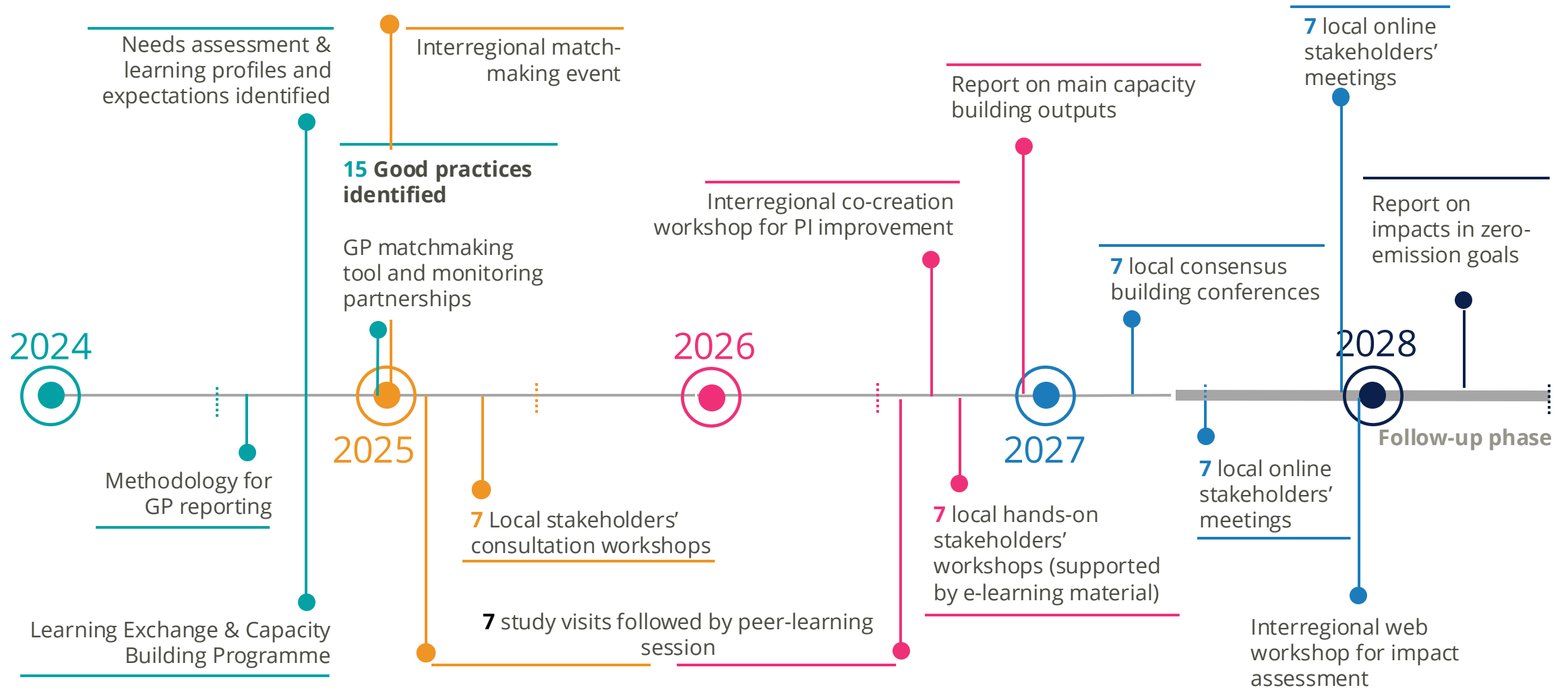


Regional state-of-play in inclusive & data-driven decision support tools for sustainable mobility planning/ implementation

REFOCUS intervention timeline



REFOCUS Exchange of Experience activities



REFOCUS Key Performance Indicators (KPIs)

69

Organisations
cooperating
across borders

7

Policy
Instruments
addressed

11

Interregional policy
learning events
organised

17

Good practices
identified

46

Organizations with
increased capacity
due to the
participation in
project activities

7

Policy instruments
improved thanks
to the project

Thank you!

www.interregeurope.eu/REFOCUS

**Interreg
Europe**



Co-funded by
the European Union

REFOCUS

The project REFOCUS is implemented in the framework of the Interreg Europe programme and co-financed by the European Union.

www.interregeurope.eu

www.interregeurope.eu/REFOCUS

