

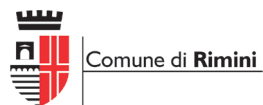
► What is Interreg Europe?

Interreg Europe helps regional and local governments across Europe to develop and deliver better policy. By creating an environment and opportunities for sharing solutions, the aim is to ensure that government investment, innovation and implementation efforts all lead to integrated and sustainable impact for people and place.

► Regional Policy Instruments

The European Union is working to reduce disparities in development and quality of life in European regions. Policy instruments include actions that helps European regions to be more innovative, more sustainable, and more inclusive; thus improving quality of life for its peoples and communities.

► Partners



www.interregeurope.eu/spotlog



Interreg
Europe



Co-funded by
the European Union

SPOTLOG



SPOTLOG (Green and Socially resPOnsible ciTy Logistics InnovaTions) aims to involve local communities in creating socially responsible logistics systems, based wherever possible on zero-carbon modes, through the intelligent use of all available resources and taking advantage of the digitalisation of goods and passenger transport services.

By focusing on low-density communities and medium-sized cities, SPOTLOG partners aim to improve regional policy instruments toward the European goals of inclusive and carbon-neutral mobility.



► **SPOTLOG main challenges**

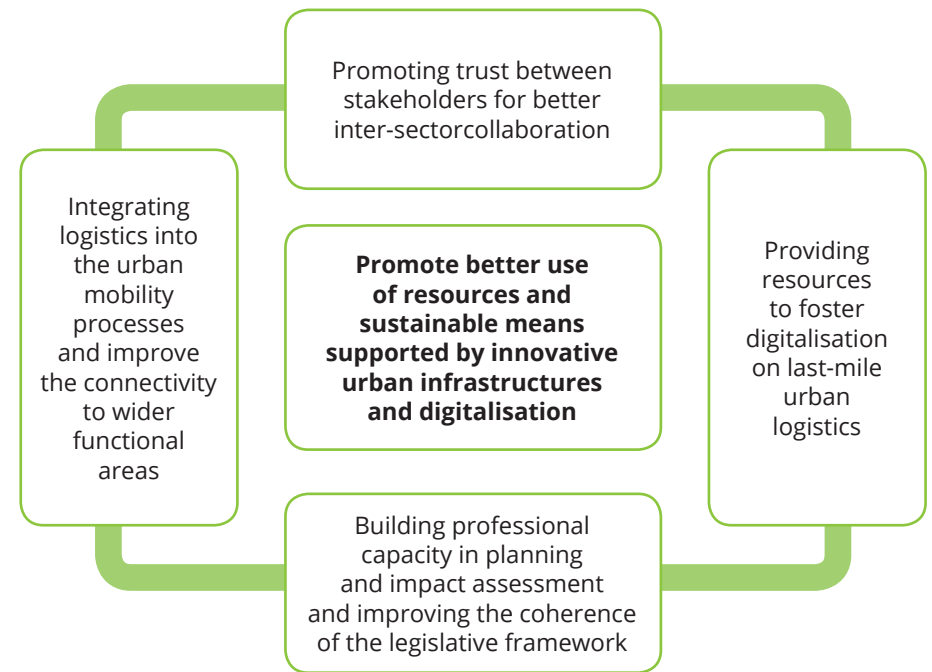
SPOTLOG works towards Policy Instruments improvements and by 2026 the goal is to have new projects, improved management or structural change:

- *Operational Programme Centro 2030*
- *Sustainable Urban Mobility Plan - Municipality of Rimini*
- *Sustainable Urban Mobility Plan for Constanta National Growth Pole - Constanta Metropolitan Area*
- *Mazovian Voivodeship Regional Operating Programme 2021-2027 - Urban Mobility in Mazovia*
- *Vidzeme Planning Region Development Programme 2022-2027*
- *Mechelen Mobility Plan (SUMP) and the covenant for sustainable urban logistics*
- *Lille Sustainable Last-Kilometer Urban Logistics Action Plan*

► **SPOTLOG objectives**

The cross-cutting approach of SPOTLOG is intended to address multiple practical and policy aspects related to last-mile logistics support and a comprehensive assessment of urban logistic impacts on society. Based on a multidisciplinary consortium with heterogeneous backgrounds, SPOTLOG partners will build a co-creation platform focused on:

- *Sharing knowledge and spotting good practices regarding innovative ways of efficient logistical distribution and zero-carbon modes*
- *Promoting trust between stakeholders for better inter-sector collaboration*
- *Building professional capacity in planning and impact assessment of the various solutions and improving the adequacy of the legislative framework and sustainable mobility plans*



SPOTLOG will contribute to feeding a knowledge hub focused on decreasing the carbon footprint associated with the last-mile transport of goods in dense urban and rural areas.