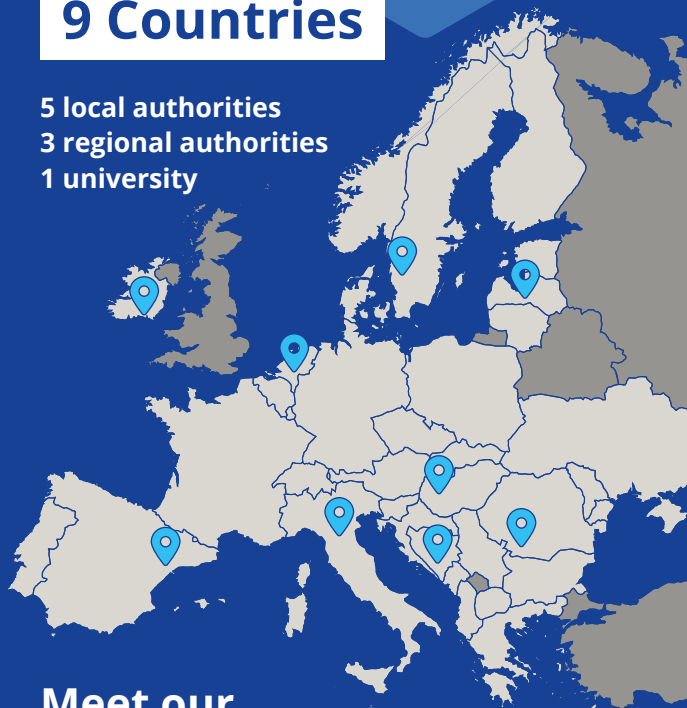


9 Countries

5 local authorities
3 regional authorities
1 university



Meet our Project Partners:

Lead Partner

- Municipality of Reggio Emilia, **Italy**

Advisory Partner

- Erasmus Centre for Urban, Port and Transport Economics BV, **Netherlands**

Partners

- Southern Regional Assembly, **Ireland**
- Manresa City Council, **Spain**
- Riga Planning Region, **Latvia**
- Regional Development Agency South-West Oltenia, **Romania**
- Municipality of Veszprém, **Hungary**
- Municipality of Varberg, **Sweden**

Discovery Partner

- Municipality of Centar Sarajevo, **Bosnia and Herzegovina**

Interreg Europe



Co-funded by the European Union

PROXIMITIES

Further Information

- 🌐 www.interregeurope.eu/proximities
- 📘 www.facebook.com/ProximitiesProject
- ✂️ www.X.com/PROXIMITIES_IE
- 📷 www.instagram.com/proximities_interregeurope
- 🌐 www.linkedin.com/company/proximities-project
- ▶️ www.youtube.com/@PROXIMITIESProject



Interreg Europe



Co-funded by the European Union

PROXIMITIES

PROXIMITIES Project



PROXIMITIES supports local and regional authorities to redesign greener, healthier, more accessible and livable peripheral urban areas.



CITIZENS

About PROXIMITIES

Interreg Europe is an interregional cooperation programme co-financed by the European Union. The programme helps local, regional and national organisations across Europe to develop and deliver **better regional development policies**.

The PROXIMITIES Project - Promoting accessible services, livable spaces and sustainable connections in peripheral urban territories - brings together policy-makers from across Europe to share ideas and experiences.

The goal of PROXIMITIES is to improve local and regional policies that support the accessibility, livability and sustainability of peripheral urban areas.



Towards the City of Proximity

PROXIMITIES aims to redesign greener, healthier, more accessible, and livable peripheral urban areas.

The project focuses on creating interconnected peripheral urban environments where essential services and economic opportunities are within easy reach, fostering a strong sense of community and sustainability.

PROXIMITIES will improve local and regional policies in the field of integrated sustainable development of peripheral urban areas through **five key approaches**:

- 1. Proximity economy and services**
Fostering local economies and accessible services within walking distance.
- 2. Sustainable and soft connections**
Developing green transportation and soft mobility options linking core and peripheral areas.
- 3. Quality and livability of public spaces**
Emphasising resilience and the natural environment in urban design.
- 4. Social and emotional dimensions**
Building community ties and enhancing social interactions.
- 5. Governance and functional approaches**
Encouraging collaborative policy-making and integrated urban planning.

Results

Overall results to be achieved for the promotion of accessible services, livable spaces and sustainable connections in peripheral urban territories are

- ✓ To **include peripheral urban areas in strategic planning** as key drivers for sustainable city development.
- ✓ To **increase policy makers and stakeholders' capacities** to implement an integrated vision for the sustainable development of peripheral urban areas, according to the 5 key PROXIMITIES approaches.
- ✓ To **promote a more positive mindset among citizens** towards peripheral urban areas as livable places for community regeneration, socio-economic innovation, and environmental protection.
- ✓ To **investigate and compare different peripheral urban areas** in Europe.
- ✓ **Interregional exchange learning process** based on study visits and knowledge exchange sessions.
- ✓ **Dissemination** of project's results and findings.
- ✓ Identification of at least **24 Good Practices from 8 countries**.
- ✓ Improvement of **7 policy instruments** according to project's learnings.
- ✓ Improvement of **48 organisations' capacity** thanks to their participation in the project.

A Few Numbers



2,225,475 €
budget



01 Apr 2024 -
30 Jun 2028



9 partners

