

Interreg  
Europe



Co-funded by  
the European Union

## INERTWASTE

# Introduction

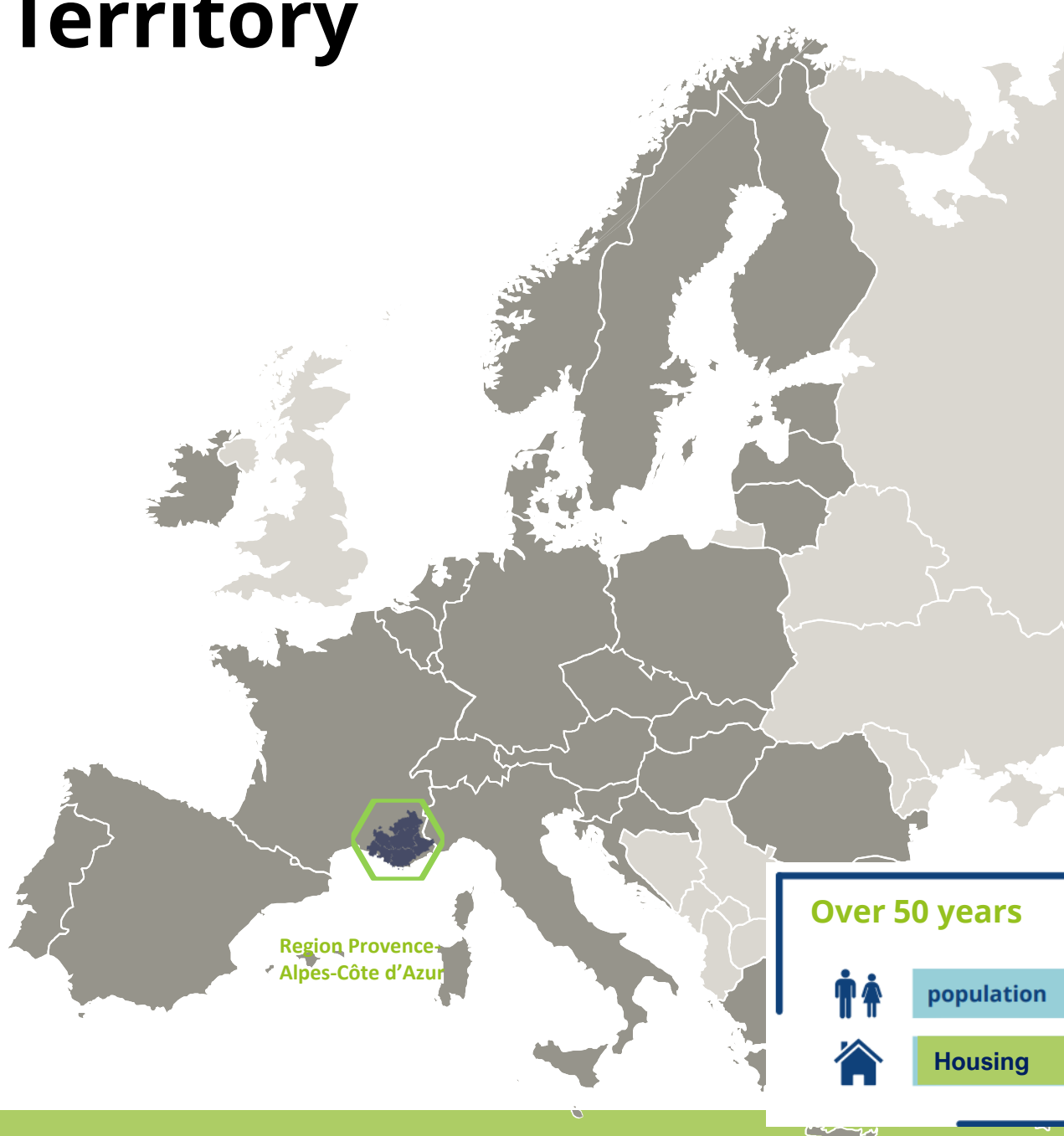
*Commitments and policies of the Region Sud in terms of ecological transition, waste prevention, and circular economy management*

Géraldine POLLET  
*Deputy General Director*

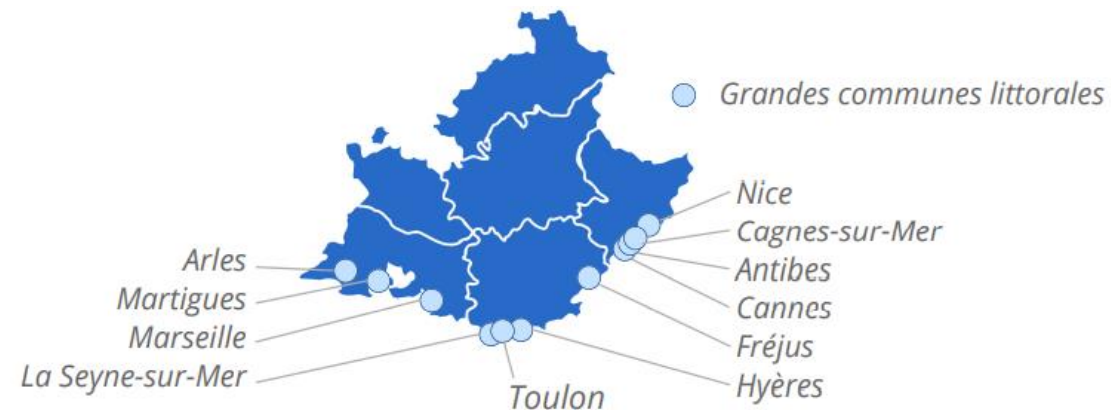
09.10. 2024 | MARSEILLE



# Territory



## Population concentrated on the coast



Population : **5. 100. 000** people

**946** municipalities / **60** groupings of municipalities with waste competence

Région Sud **rank number 10** in the list of regions by population.

### Over 50 years



population + 50 %



Housing + 100 %

**1 in 2 inhabitants** live in a coastal municipality



# Particularities of the territory

## A remarkable nature



The Southern region has the largest area of natural spaces of any region in France



Remarkable biodiversity: almost 3/4 of French species

## Environmental challenges



Risk of fragmentation of spaces



Higher waste production and less recycling than other regions



Greenhouse gases from industry



The car is the most used means of transport, even over long distances



High water use (2/3 for agriculture), strong drought due to climate change (water restrictions on more than 200 communes since April)



# A wide variety of backgrounds and of natural habitats

## Le Mont-Ventoux 2020

35 Communes (84)  
85 913 hectares  
88 215 habitants  
500 K€ de cotisation  
Coopération avec le Liban



## Les Baronnies provençales 2015

97 Communes sur deux départements (26 et 05)  
de deux régions  
181 800 hectares  
35 855 habitants  
272 K€ de cotisation



## Le Queyras 1977

10 Communes (05)  
61 000 hectares  
2 500 habitants  
762 K€ de cotisation



## Le Luberon 1977

77 Communes (84 et 04)  
185 000 hectares  
183 800 habitants  
1,3 M€ de cotisation  
Coopération avec le Maroc



## Les Alpilles 2007

47 Communes (13)  
51 000 hectares  
47 000 habitants  
730 K€ de cotisation



## La Camargue 1970

3 Communes (13)  
100 000 hectares  
10 000 habitants  
874 K€ de cotisation  
Coopération avec le Costa Rica



## La Sainte-Baume 2017

26 Communes  
81 000 hectares  
58 500 habitants  
450 K€ de cotisation  
Coopération avec le Japon



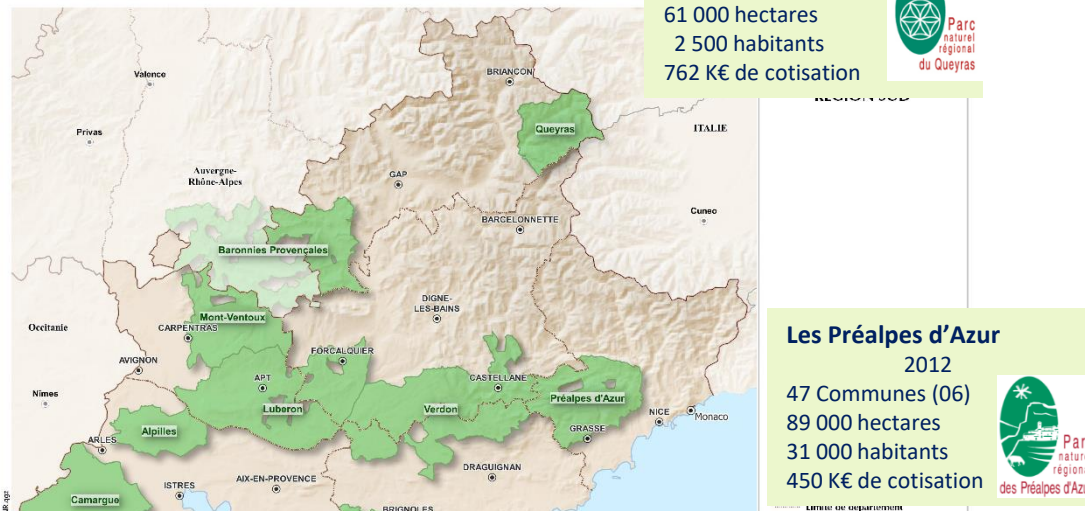
## Le Verdon 1997

46 Communes (04 et 83)  
188 000 hectares  
35 000 habitants  
980 K€ de cotisation  
Coopération avec Djibouti



## Les Préalpes d'Azur 2012

47 Communes (06)  
89 000 hectares  
31 000 habitants  
450 K€ de cotisation



- 56% of the territory in protected areas
- **9 Regional Natural Parks + 2 planned**
- 4 National Parks
- 17 Nature reserves, 7 of which are regional – 6 planned
- 128 terrestrial Natura 2000 sites (30% of the territory)
- 13 Natura 2000 marine sites
- 74 sites, properties of the Conservatoire du Littoral

# 11 themes of the sustainable land use plan



**More than 24 goals**  
**Several rules for environment**

**Amendment 2022**

The challenge of taking the **circular economy** into account

**SRDEII**

**4**

**Operations of regional interest**

Naturalness  
 Economy of the Sea  
 Renewable energies  
 Industry of the Futur

Regional Waste Prevention and Management Plan (PRPGD)

# Key messages SRADDET

## strategic territorial planning coordinator

**Demographic issue** → restoring attractiveness to the South

**Land take issue** → no spare region

**City centres renewal issue** → too many of our city centers are wasting away

**Housing issue** → everyone must be able to find accommodation for himself and their children in our region

**Energy and ecological transition issue** → changing our development model to preserve our children

**Mobility, transport and intermodality issue**  
→ breathing new life into our region

**Waste and circular economy issue**

**→ do not leaving a trash region to our children**

the SRADDET instrument included the Regional Waste Prevention and Management Plan (PRPGD)



# Some objectives of the SRADDET in the South Region

- Reduce the rate of consumption of agricultural, natural and forestry areas by 50%: 375 ha/year by 2030
- Demography : a target of +0.4% by 2030 and 2050
- Achieve 0 loss of irrigated agricultural land
- Horizon 2030 : + 30,000 homes per year, 50% of which should be affordable housing
- Horizon 2050 : thermal and energy renovation of 50% of the old stock
- A carbon neutral region in 2050
- An intermodal transport offer by 2022
- **Recover 65% of waste ; Recover 75 % of Construction Waste**



# Circular Economy and Waste Department competences

The role of the Région “WASTE COMPETENCE”: To coordinate all the actions undertaken by both public authorities and private organizations in order to ensure the achievement of the objectives of the national waste prevention and management policy and to contribute to the transition towards a circular economy.

- **Leader in the circular economy**
- **strengthens the role of the Regions of coordination and animation of local actors of the circular economy**
- **Territorial Waste prevention and management Plan integrated into the SRADDET**



Household Waste

Waste from economic and energy activities

Construction Waste

Hazardous waste

Nonhazardous Solid Waste

INERT Waste



# Regional Strategy Construction Waste

## 3 strategic axes for the management of construction waste

### 1. Knowledge of waste flows : Regional waste observatory

- Annual survey of over 300 collection/sorting/treatment/recycling facilities
- Drafting of the waste planning and annual dashboard
- Link with stakeholders
- Monitoring of regulatory impacts

### 2. Knowledge of waste flows : Regional waste observatory

- Network meetings in technical working groups
- Publication of good practice guides
- Support for contractors to integrate the circular economy into construction sites
- Follow-up and capitalization of construction and public works operations

### 3. Financing of structuring projects

- Support for project development and capitalization
- Consistency with the network in relation to waste planning

**Interreg  
Europe**



Co-funded by  
the European Union

## INERTWASTE

# Support for integrating the circular economy into construction contracts and operations

Marine ABADIE

*mabadie@maregionsud.fr*

Barbara CHOLLEY

*bcholley@maregionsud.fr*

09.10. 2024 | MARSEILLE



# SUPPORT APPROACH for integrating the Circular Economy into construction contracts and operations

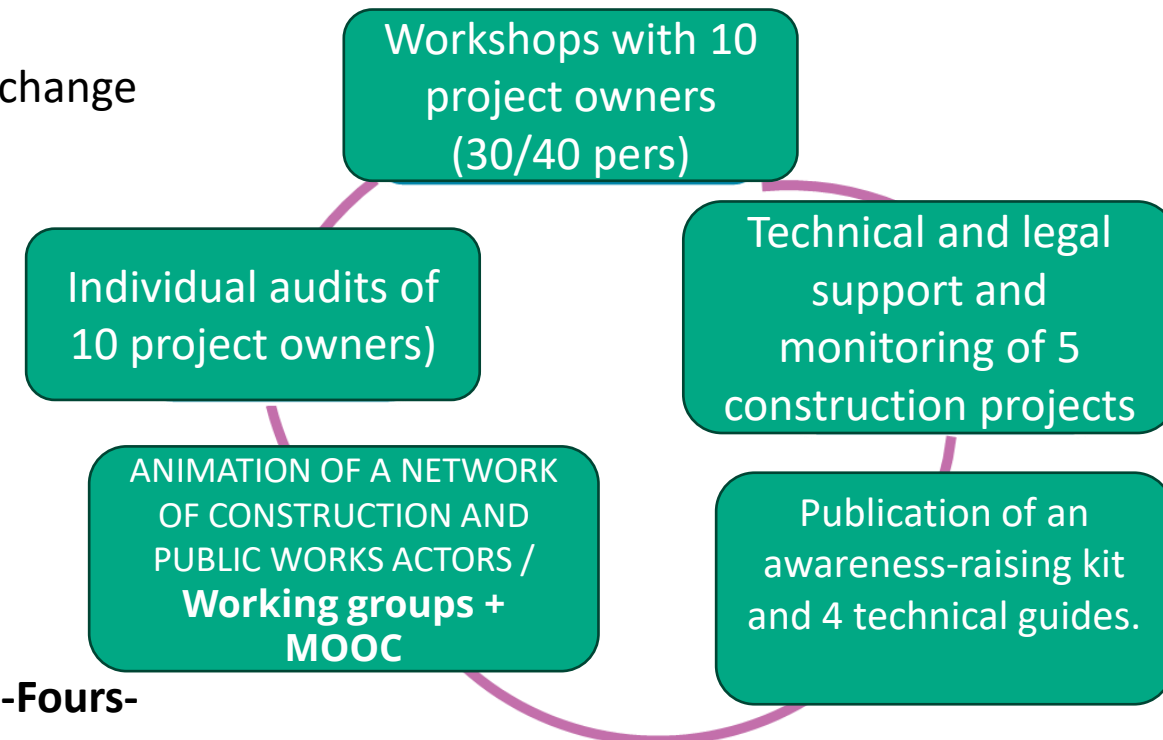
European LIFE IP SMART WASTE project (Regional operation ~200 k€)

## PHASE 1: 2019 – 2022

- Engage 10 volunteer project owners on a long-term basis to change their practices
- Anticipate future regulations (AGEC Law),
- Target financial savings,
- Join a network of committed professionals
- Gain consistency in an exemplary local authority approach,
- Be a demonstrator with local visibility, including media coverage.

## PHASE 2: 2023 – 2024

- Monitor 5 construction projects (Tramway: Nice Metropole, **Six-Fours-les-Plages School Complex (TLJ2's GP)**, Euromediterranée, Marseille Metropole Business Incubator, Toulon City Council).
- Publish 5 feedback sheets.



# SUPPORT APPROACH for integrating the Circular Economy into construction contracts and operations

## European LIFE IP SMART WASTE project (Regional operation ~200 k€)

An initiative to support project owners in Region SUD (2020-2024): to raise awareness among the players involved and encourage them to improve their skills in order to change practices so as to save primary resources, prevent the production of waste, know how to manage the waste produced, and use secondary resources and materials from waste recycling in all construction, rehabilitation, public works and development projects: in short, to offer a range of practical tools for 'integrating the circular economy into building and public works contracts, operations and sites'.

⇒ Kit de sensibilisation pour l'intégration de l'Economie Circulaire dans le BTP

Nouvelle publication avec MISE A JOUR en NOVEMBRE 2024

⇒ Guide N°1 « Intégrer l'Economie Circulaire dans les marchés et opérations de travaux du Bâtiment »

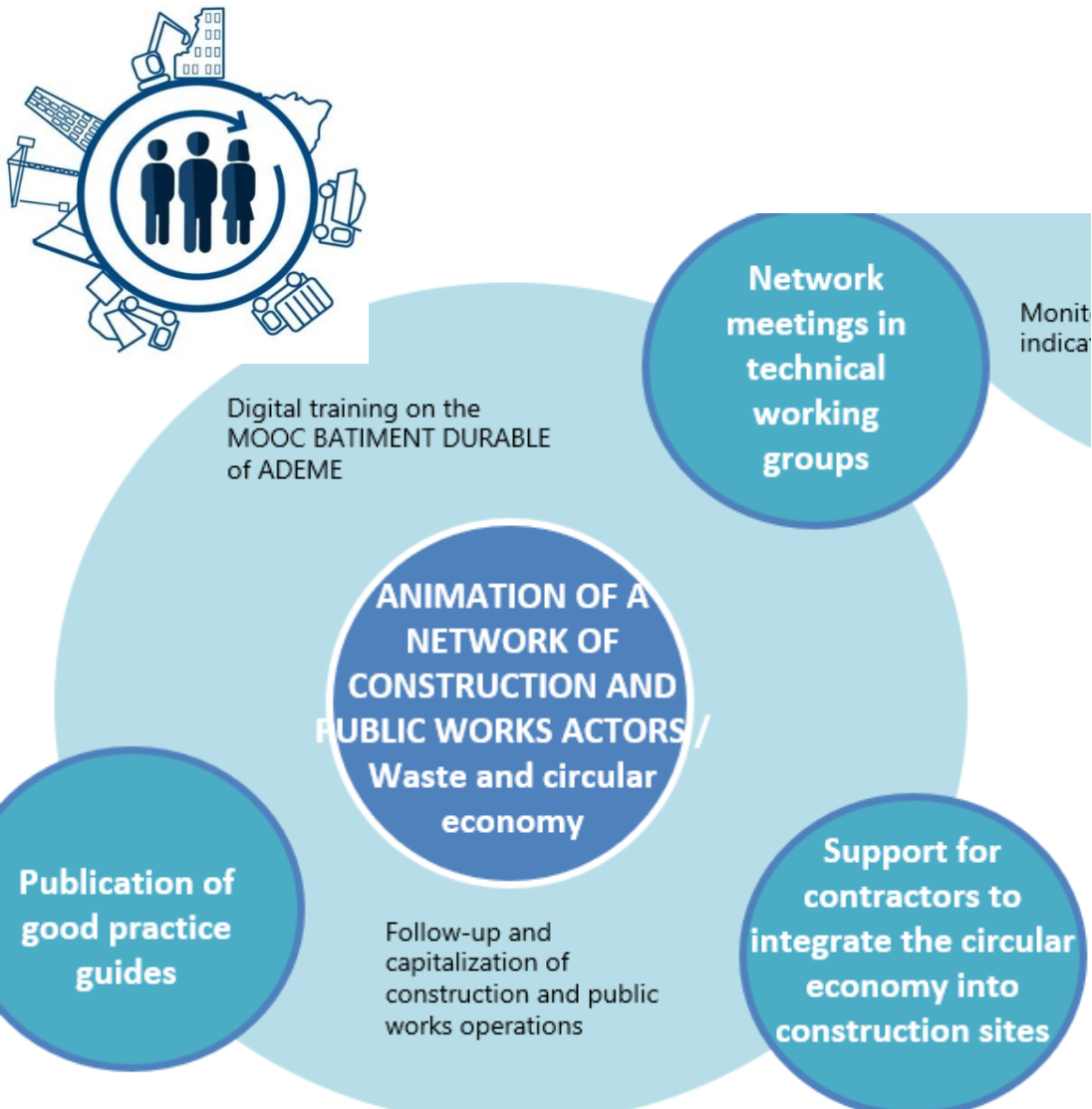
⇒ Guide N°2 « Diagnostic PEMD » et son Annexe « CCTP Réalisation d'un diagnostic PEMD .doc »

⇒ Guide N°3 « Intégrer l'Economie Circulaire dans les marchés et opérations de Travaux Publics »

⇒ Guide N°4 « Utiliser les Ressources Secondaires dans le BTP »



# ANIMATION OF A NETWORK OF CONSTRUCTION AND PUBLIC WORKS ACTORS / Waste and circular economy



## From 2020 to 2024 : 13 working groups open to the public

- Regional actor network on waste and Circular economy in the construction sector
- 100s of participants for each WG
- **The Internet Portal with Community** : 'Réseau des Acteurs du BTP | Déchets et Economie Circulaire' :

Community on the digital platform **RESEAU PRECI. ORG : Les communautés de reseau-prec.org.**

- ✓ News
- ✓ Documentary resources
- ✓ Forum

# Leading a community network of professionals

## TECHNICAL WORKING GROUPS WG# Construction | Waste and Circular Economy

2020

**WG#01**  
Regulatory developments, traceability, company practices

**WG#02** Prevention and re-use in the building and public works sector

**WG#03**  
Management of Inert Waste from Construction and Public Works

2023

**WG #08** The Gypsum Cycle from A to Z: Production, Deconstruction, Sorting, Recycling, Recovery, Circular Economy- Visit to the ETEX Carpentras plant

**WG#09** Excavated earth and sediments - Excavated soil reuse platform visit - Euroméditerranée - Marseille

**WG#10** The circular economy of construction and public works in rural areas- Visit to the Alpes Recyclage Château-Arnoux professional waste collection centre

2021

**WG#04**  
Management of Non-Hazardous Waste from Construction and Public Works

**WG#05** Monitoring of 5 operations Other initiatives to support contractors

2024

**WG#11** 'Understanding territorial/urban metabolism, the basis for a metropolitan circular economy strategy!

Visit to recycling plant and concrete plant - Nice

**WG#12** Circuit Visit to the circular economy of the building and public works sector in the Var: the path of materials and waste from a building site to the reuse, recycling and treatment sectors

November 2024

**GT#13**  
The joinery (doors and windows) cycle from A to Z  
Removal, storage, sorting, dismantling, reuse, recycling, recovery  
Visit to a dismantling site

2022

**WG#06** Assessment of the approach and Next steps Political support Industry solutions

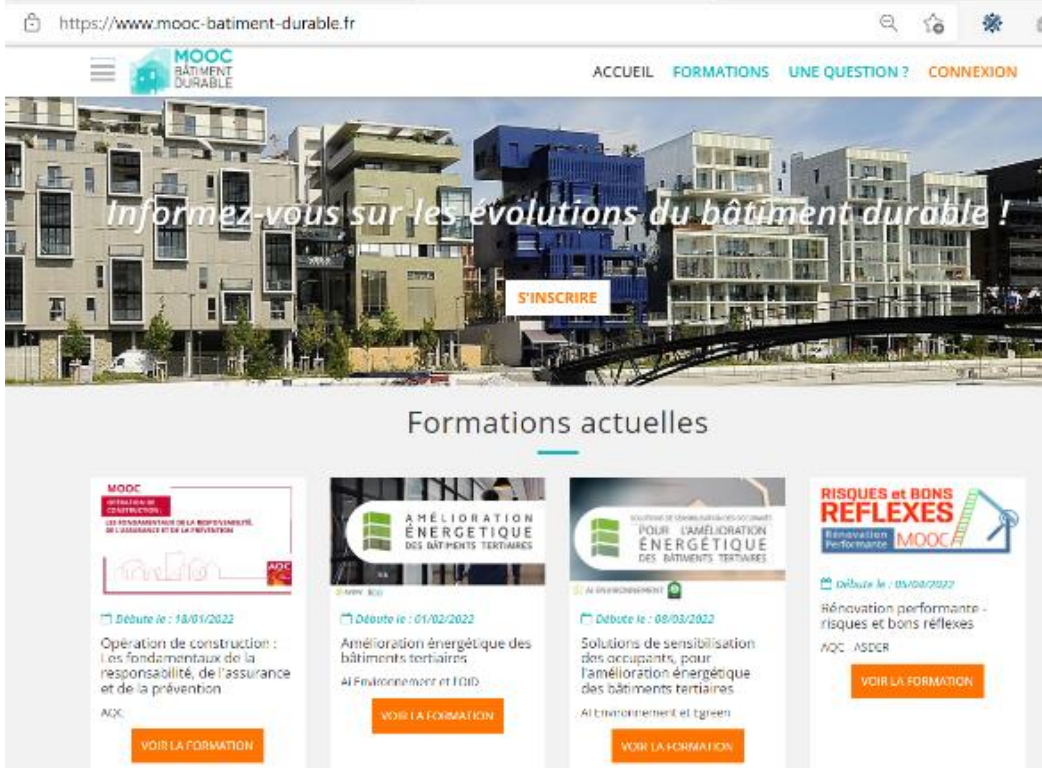
**WP#07** Traceability systems for products, equipment, materials, waste, soil and sediment



# MOOC waste and construction Integrating the Circular Economy into contracts and and construction operations

- 5 to 8 hours of training over a 2-month session
- FREE on the ADEME Platform: MOOC Sustainable Building
- Over the first 2 sessions: 240 certificates of achievement issued nationally
- 3 SESSIONS since 2023: around 2,500 registrations in France
- Permanent stand-alone MOOC available from December 2024

[Accueil | MOOC Batiment Durable \(mooc-batiment-durable.fr\)](https://www.mooc-batiment-durable.fr)



The screenshot shows the homepage of the MOOC Batiment Durable website. The URL is https://www.mooc-batiment-durable.fr. The page features a navigation menu with 'ACCUEIL', 'FORMATIONS', 'UNE QUESTION?', and 'CONNEXION'. A large banner image of modern buildings is overlaid with the text 'Informez-vous sur les évolutions du bâtiment durable!' and a 'S'INSCRIRE' button. Below the banner, the section 'Formations actuelles' displays four course cards:

- MOOC OPÉRATION DE CONSTRUCTION**: Les fondamentaux de la responsabilité, de l'assurance et de la prévention. Début le : 18/01/2022. AQC.
- AMÉLIORATION ÉNERGÉTIQUE DES BÂTIMENTS TERTIAIRES**: Début le : 01/02/2022. A l'Environnement et l'ÉD.
- POUR L'AMÉLIORATION ÉNERGÉTIQUE DES BÂTIMENTS TERTIAIRES**: Solutions de sensibilisation des occupants, pour l'amélioration énergétique des bâtiments tertiaires. Début le : 08/03/2022. A l'Environnement et l'Éd.
- RISQUES et BONS REFLEXES**: Renovation Performante MOOC. Début le : 05/04/2022. Renovation performante - risques et bons réflexes. AQC - ASDCR.

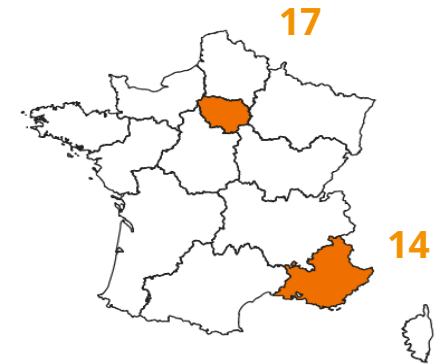


# 2024-2026: Partner in the project "Sober Construction (Bati-Sobre)" piloted by ADEME (French government's environment agency)

Supporting 31 contracting authorities in the sobriety of their construction projects in the Paris region and the Provence-Alpes-Côte d'Azur region.

- **10 group workshops and webinars on the challenges of the winning projects:** insurance, legal, economic and organisational issues, measuring circularity, avoided/eco-designed/recycled materials, etc.
- **Individual coaching for 3 to 10 days per winning project:** internal practices, behaviour change, sourcing circular materials, project performance in terms of circularity, etc.
- **A network of experts** who can be mobilised according to the collective needs of BATI-SOBRE
- **A committee of partners**
  - Restricted: qualified people chosen for their potential contribution to BATI-SOBRE
  - Expanded: to share progress!
- **Easier access** to other support from ADEME or its partners

## BATI-SOBRE

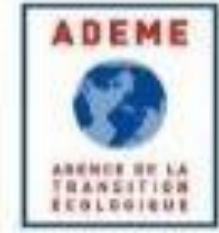


RÉPUBLIQUE  
FRANÇAISE

*Liberté  
Égalité  
Fraternité*







# The projects in figures (2024-2026)

**31 projets**  
**(30 Project owners)**

**17**  
PARIS IDF

**14** Region  
SUD

- 14** Residential units
- 6** Offices
- 3** Multi-product
- 4** Schools
- 2** Sports facilities
- 1** tudent residence
- 1** Hospital

- More than **242,000 m<sup>2</sup>**, including 43,000 m<sup>2</sup> of office space
- More than **3,560 housing units**

- 23 Renovations / Refurbishments
- 14 New builds
- 2 Demolitions / New builds

# Thank You !



**Interreg  
Europe**



Co-funded by  
the European Union

**INERTWASTE**