



# Re-orienting the overtourism discussion: A residents-first approach

Dr. Bailey Ashton Adie

University of Oulu



Photo © Bailey Ashton Adie



**The excessive growth of visitors leading to overcrowding in areas where residents suffer the consequences of temporary and seasonal tourism peaks, which have caused permanent changes to their lifestyles, denied access to amenities and damaged their general well-being.  
(Milano et al., 2019)**





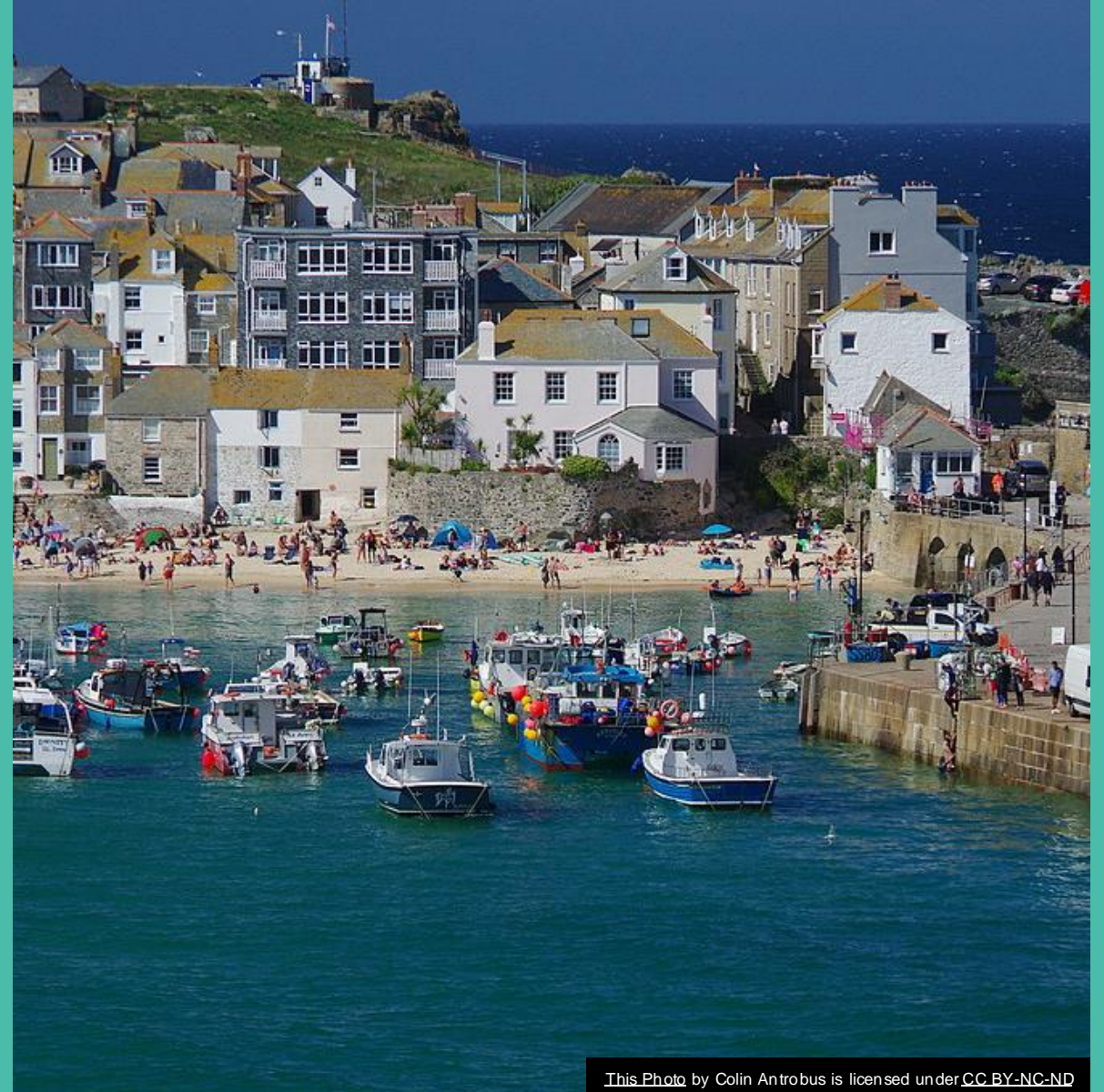
# Local residents and (over)tourism



Photo © Bailey Ashton Adie



# Responses to overtourism: St. Ives



This Photo by Colin Antrobus is licensed under [CC BY-NC-ND](https://creativecommons.org/licenses/by-nc-nd/4.0/)

# Responses to overtourism: Kyoto



Photos © Bailey Ashton Adie



# Responses to Overtourism: Kyoto



Photo © Bailey Ashton Adie



# Responses to Overtourism: Venice





# Responses to Overtourism: Seoul



This Photo by Michael Shen is licensed under [CC BY-NC-ND](https://creativecommons.org/licenses/by-nc-nd/4.0/)





## Overtourism and Cultural Heritage in Europe (Adie & Falk, 2021)



Photo © Bailey Ashton Adie



# Overtourism may be a symptom of a larger problem



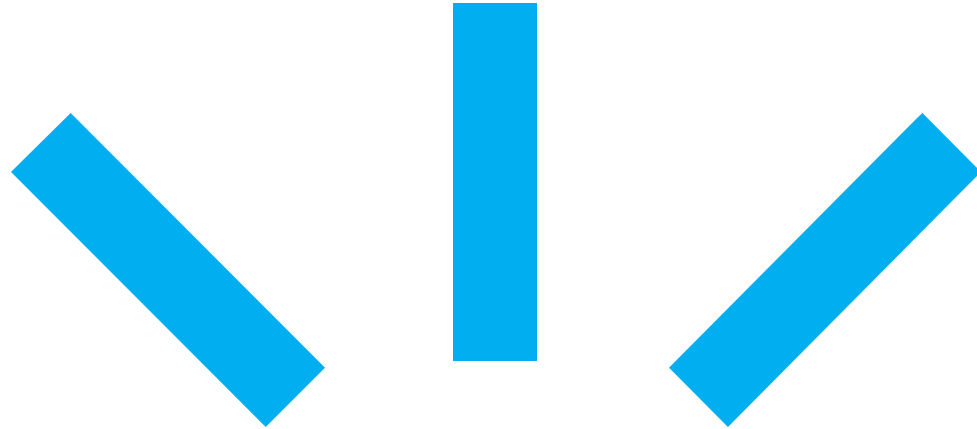
This Photo by Jennifer Woodard Maderazo is licensed under [CC BY](#)



# Tourism per se is not the problem

Cheer, Milano and Novelli (2019, p. 227)





# **The Residents-First Approach**



# Policy Measures

Bottom-up planning

Active participation not just consultation

Economic diversification and price inflation management

Housing cost and use management

Limitations on tourism development

Ensure community benefits from development

Skills training & investment to be able to engage in local tourism system



# Practical Improvements



Ensure that public transportation and infrastructure are sufficient to account for visitors and residents



Provide longer opening hours at tourist sites, particularly heritage sites



Limit tourist-centric services and provide incentives for local shops to stay



Hostile urban environments are also hostile to local residents



# Final Takeaways

---

Residents should be the first group considered when developing tourism, not an afterthought.

---

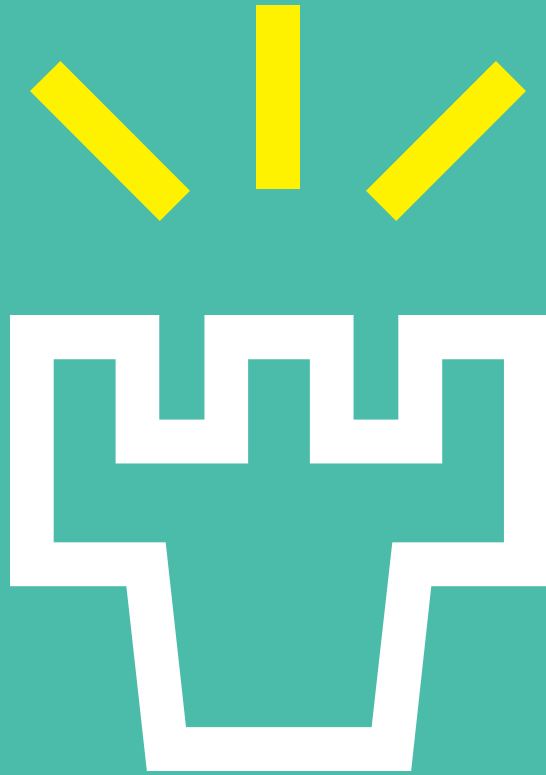
Planning for overtourism before it happens is key because afterwards, management is the only option.



# References

- Adie, B.A. & Falk, M. (2021). Residents' perception of cultural heritage in terms of job creation and overtourism in Europe. *Tourism Economics*, 27(6), 1185-1201.
- Amore, A., Falk, M., & Adie, B.A. (2020). One visitor too many: assessing the degree of overtourism in established European urban destinations. *International Journal of Tourism Cities*, 6(1), 117-137.
- Cheer JM, Milano C and Novelli M (2019) Afterword: Over overtourism or just the beginning? In: Milano C, Cheer JM and Novelli M (eds), *Overtourism: Excesses, Discontents and Measures in Travel and Tourism*. CABI, pp. 227–232.
- Milano, C., Novelli, M. & Cheer, J.M. (2019). Overtourism and Tourismphobia: A Journey Through Four Decades of Tourism Development, Planning and Local Concerns. *Tourism Planning & Development*, 16(4), 353-357.





**UNIVERSITY  
OF OULU**