

Capital Region Berlin-Brandenburg – Formal and informal spatial planning approaches addressing a large functionale urban area

Dr. Jürgen Neumüller
Joint Spatial Planning Department Berlin-Brandenburg

14 November 2024

The Foundations of Spatial Planning

The Federal Republic of Germany („Bundesrepublik Deutschland“) is a federation of states with

16 states

16 legal systems

16 state administrations



Source:
<https://reise.naano.de/statistik/bundeslaender>
(last downloaded 02.11.2020)

State Spatial Planning in the Capital Region Berlin-Brandenburg

The two federal states Berlin and Brandenburg together form the Capital Region

Berlin

3 676 000 inhabitants

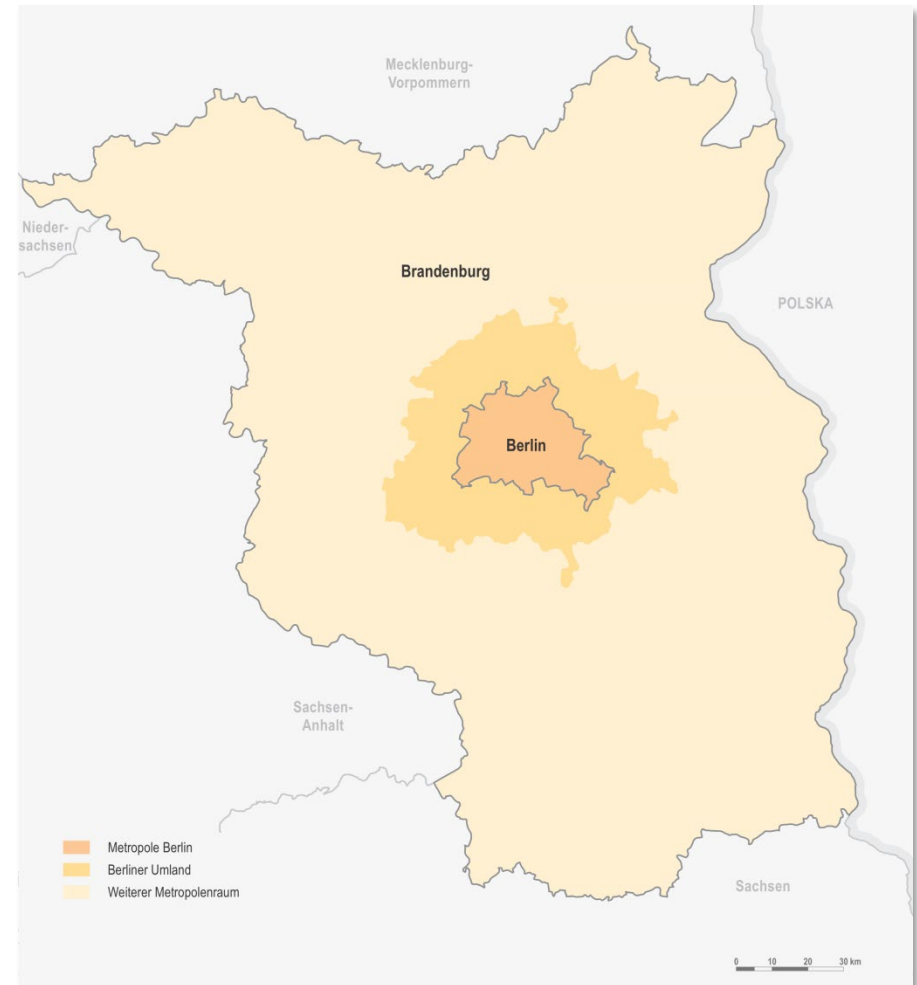
Berlin suburban area

1 023 000 inhabitants

Further metropolitan area

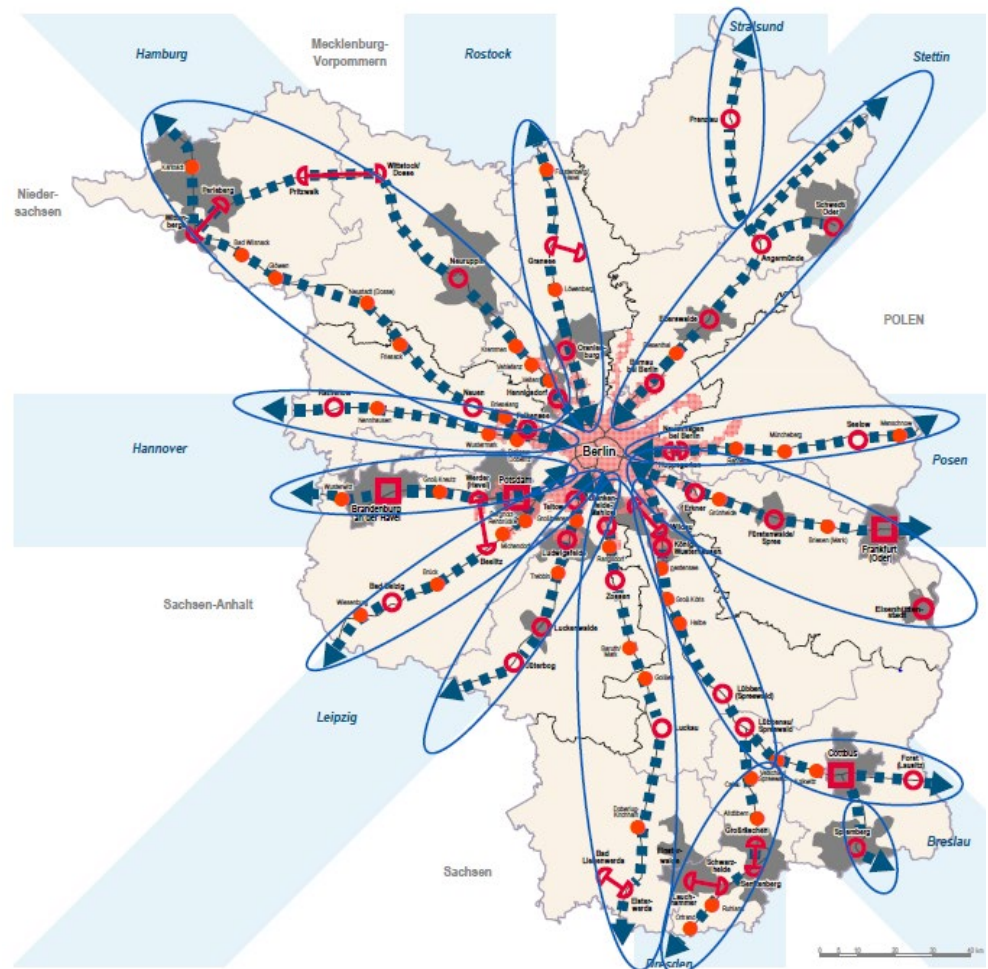
1 517 000 inhabitants

(Data from 11/2021)



How to foster the capital region Berlin Brandenburg?

- connecting strategically people, business, governments and science along the existing railway lines
- bringing growth, knowledge from central metropolitan areas to rural areas

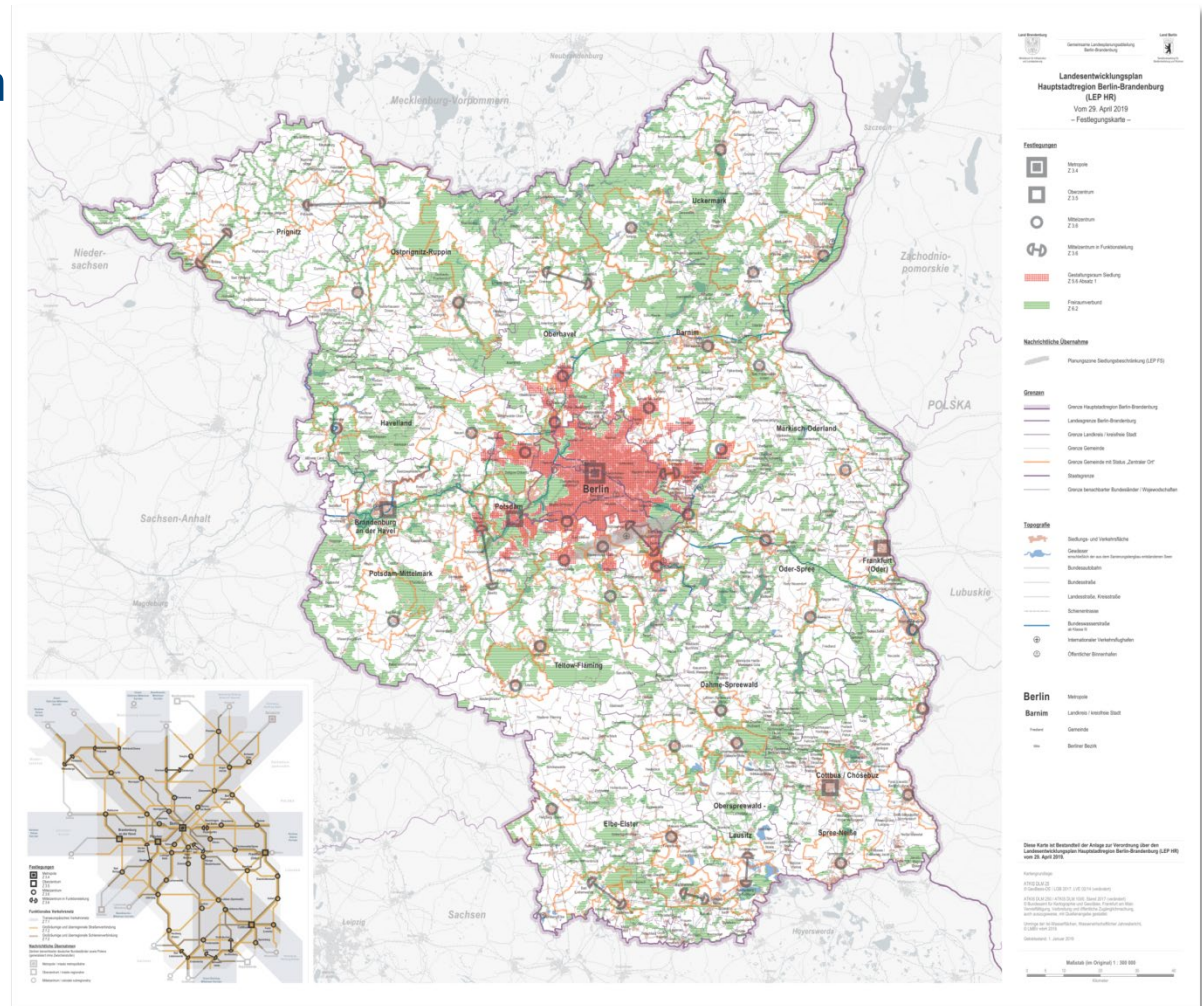


The State Development Plan of the Capital Region Berlin-Brandenburg

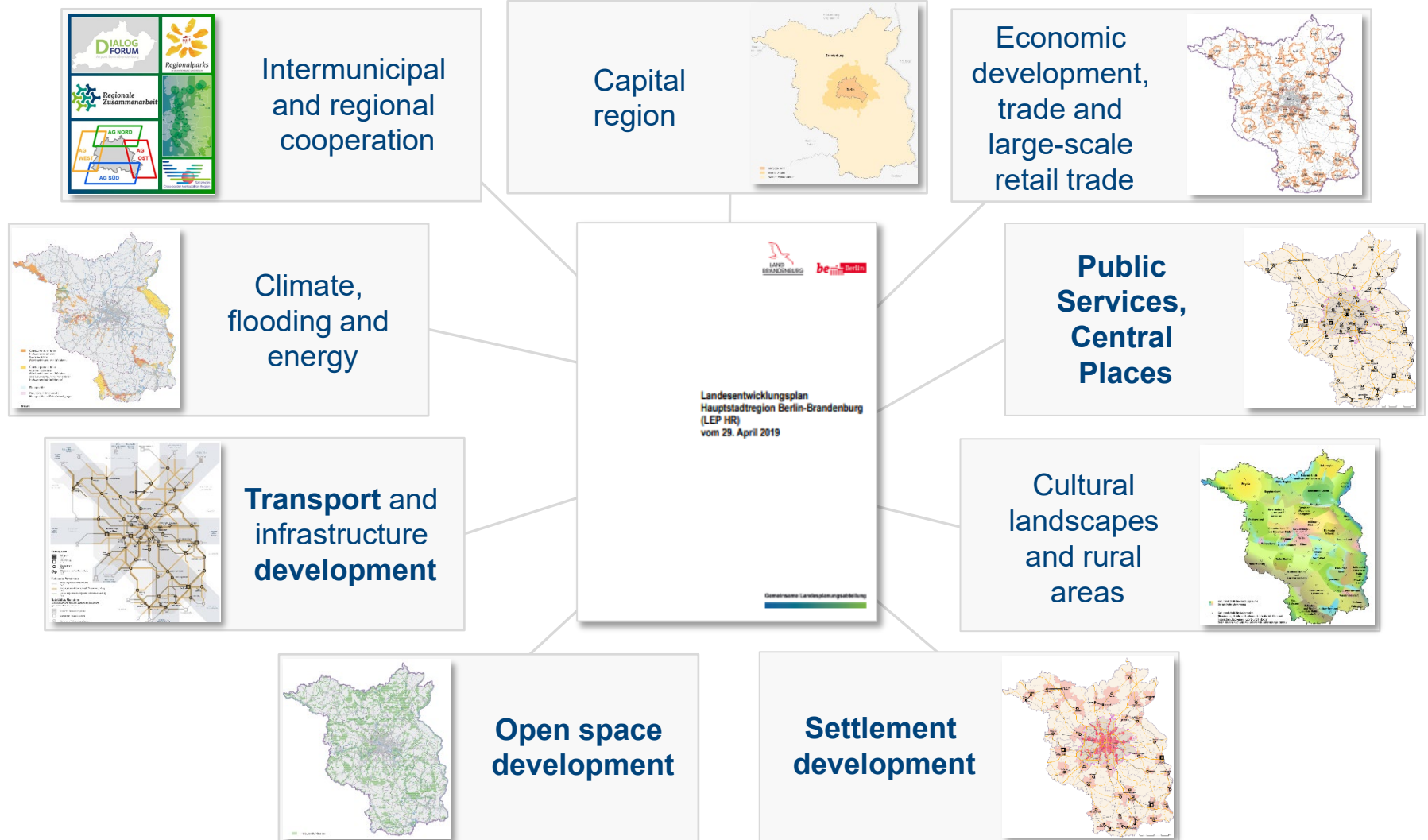
State Development Plan of the Capital Region Berlin-Brandenburg (LEP HR) of 29 April 2019

- Map of Regulations -

Enter into force as from:
1st July 2019



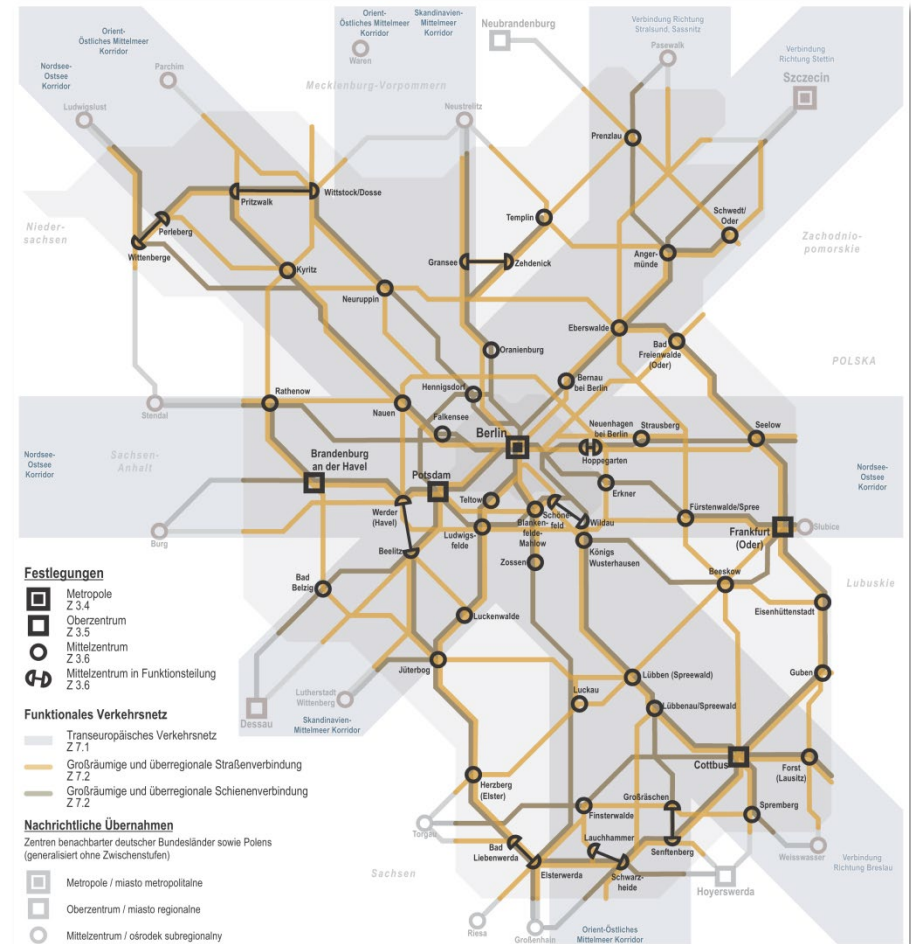
State Development Plan Capital Region - Content - textual regulations



State Development Plan Capital Region - Transportation Development

Transport

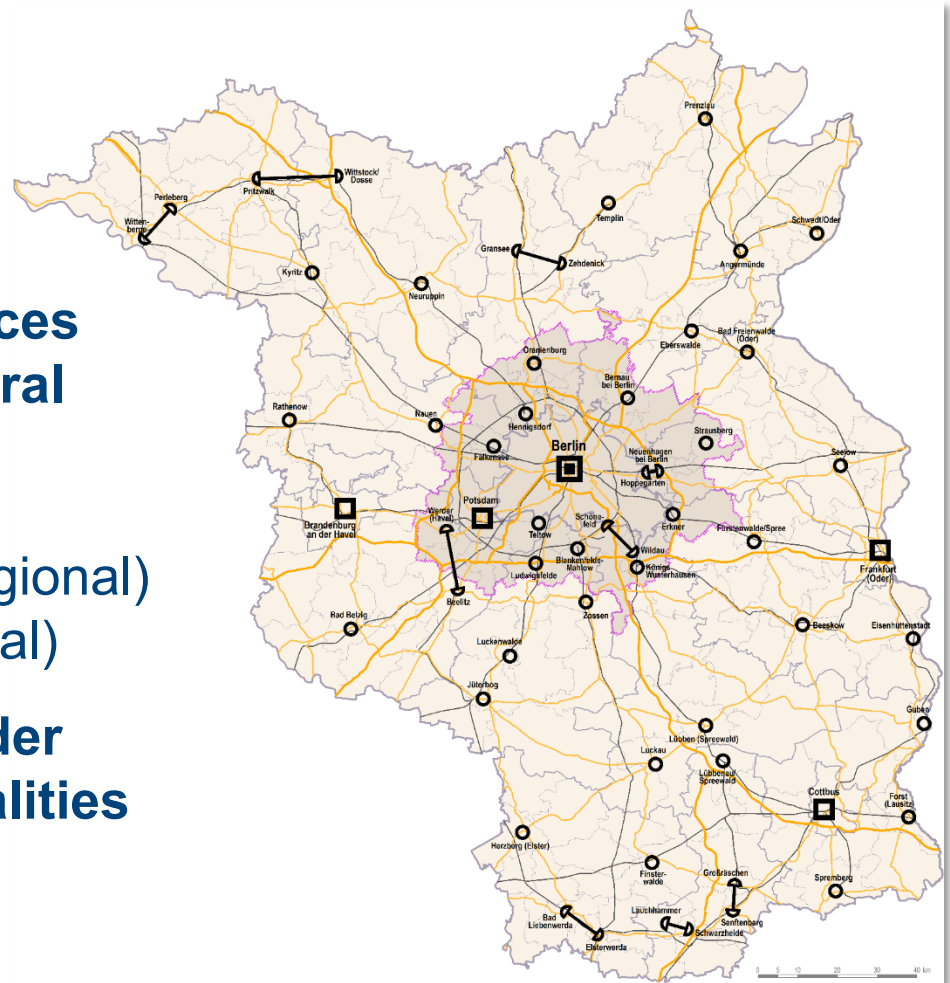
- **Functional Transport Network**
Ensuring the transport connections between central places (railways; motorways)
- **Trans-European Transport Network (TEN-T)**
Connecting the Capital Region and nodes of regional and European relevance within Europe



State Development Plan Capital Region – Spatial Controlling

Public Services, Central Places

- **Basic public services in each municipality**
- **Concentration of public services above municipal level in Central Places (3 levels in state plan)**
 - Metropolis
 - high-order centers (major regional)
 - middle-order centers (regional)
- **No determination of basic-order centers, because all municipalities provide basic public services**

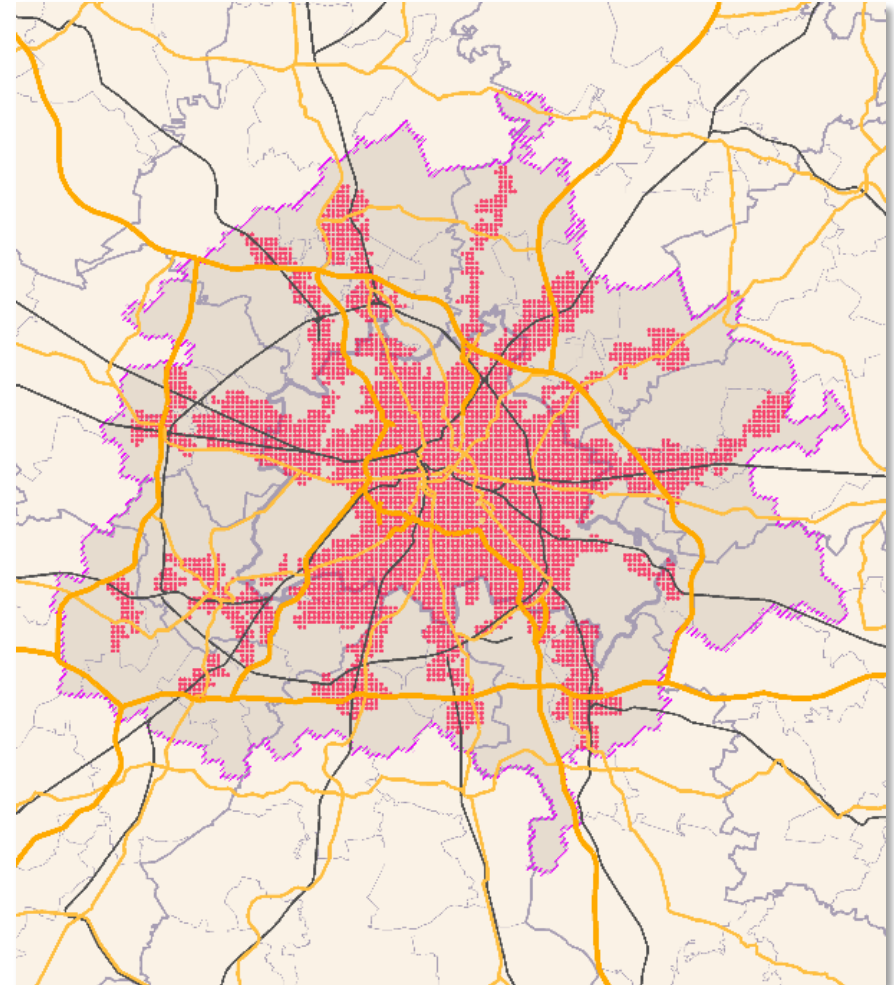


State Development Plan Capital Region – Spatial Controlling

Settlement Development

Berlin and Berlin suburban area: Settlement priority area ("star shaped settlement pattern")

- The core of Berlin and along railway-axes of the suburban region
- Like a "backbone" for the settlement development

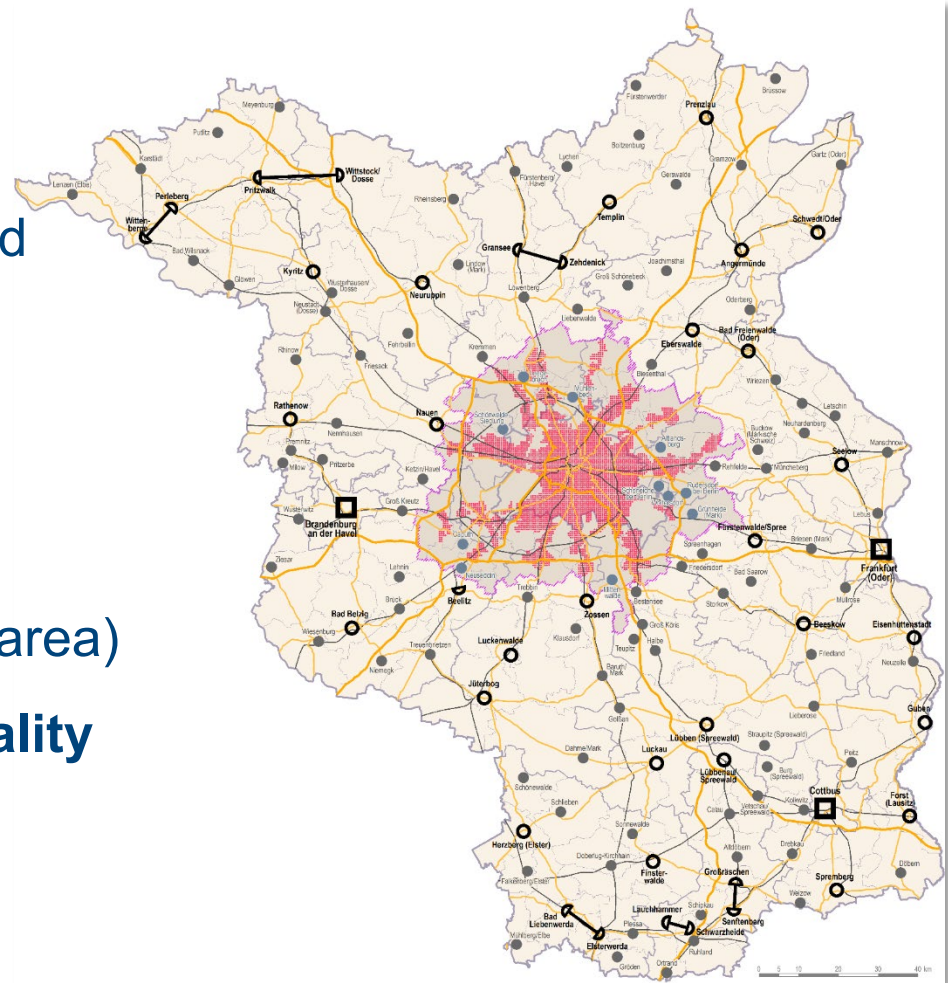


State Development Plan Capital Region – Spatial Controlling

Settlement Development

Main settlement areas (established by state and regional planning):

- **Concentration on Settlement Priority Area**
- **high-order and middle-order centers** (in further metropolitan area)
- **Core Areas for basic functionality** (in Berlin suburban area outside Settlement Priority Area and in further metropolitan area)



State Development Plan Capital Region – Spatial Controlling

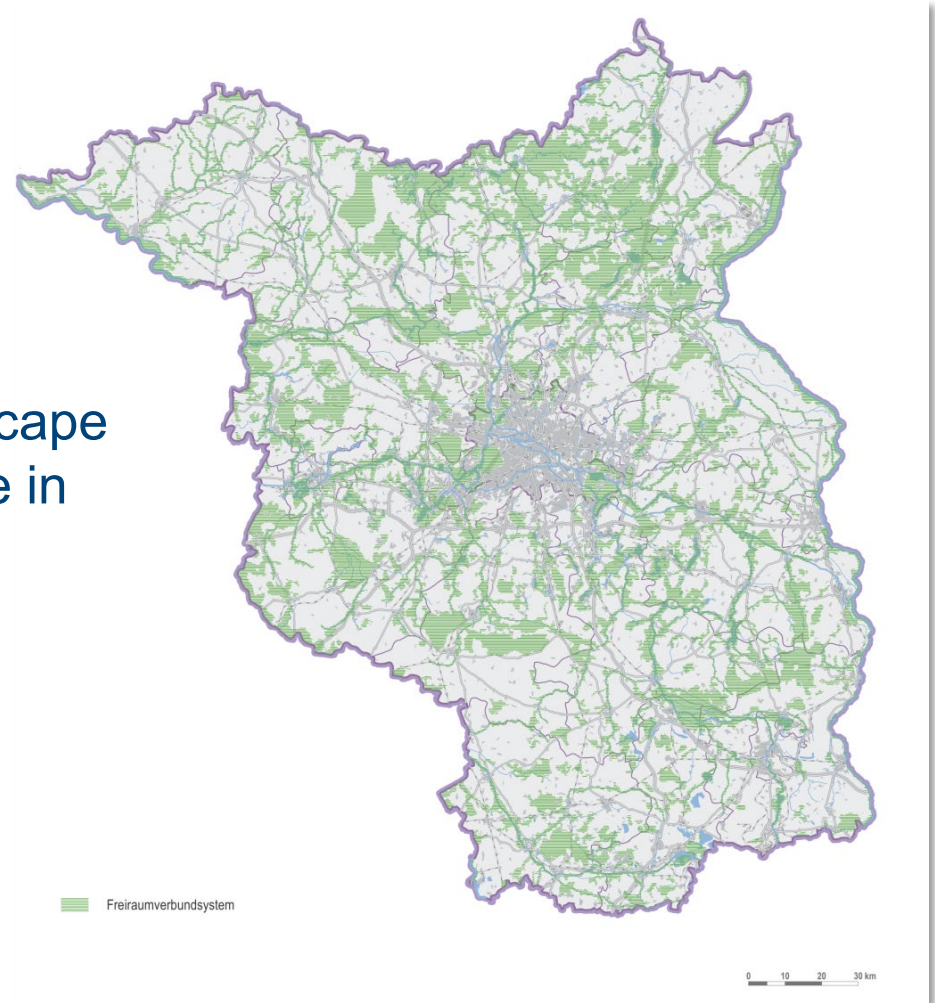
Open Space Development

Open Space Network

- High quality open spaces are spatially secured and networked
- Building development and landscape fragmentation is only permissible in exceptional cases
- Area delimitation is specified in regional plans

Open Space Development

- Should be multi-functional
- With special emphasis on agricultural land use



State Development Plan Capital Region - Spatial Development

Regional Cooperation and Development

Spatial planning provides impulses for intensifying cooperation between different governmental and civil society actors. Examples from the Capital Region Berlin-Brandenburg:

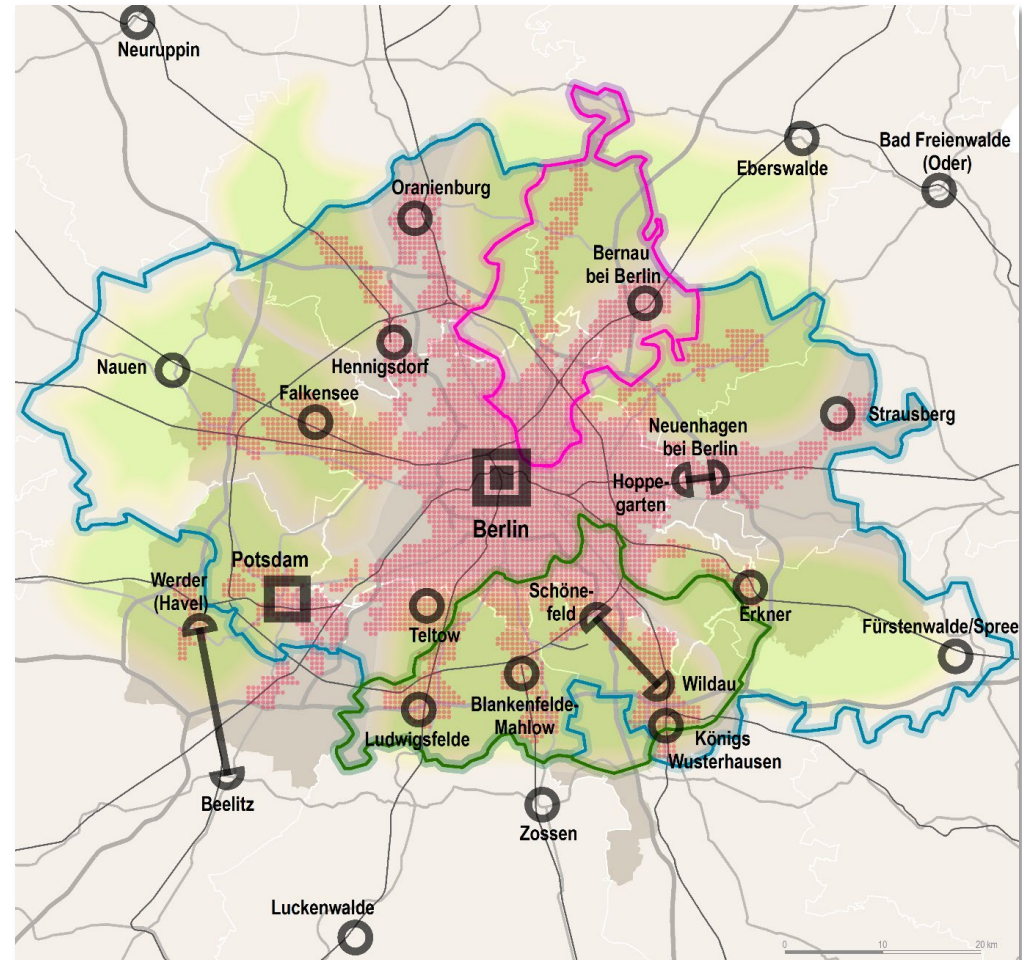
- Berlin und municipalities in Berlin Suburban Area
- Central Places and municipalities in their interdependence areas
- Transnational integration in Europe



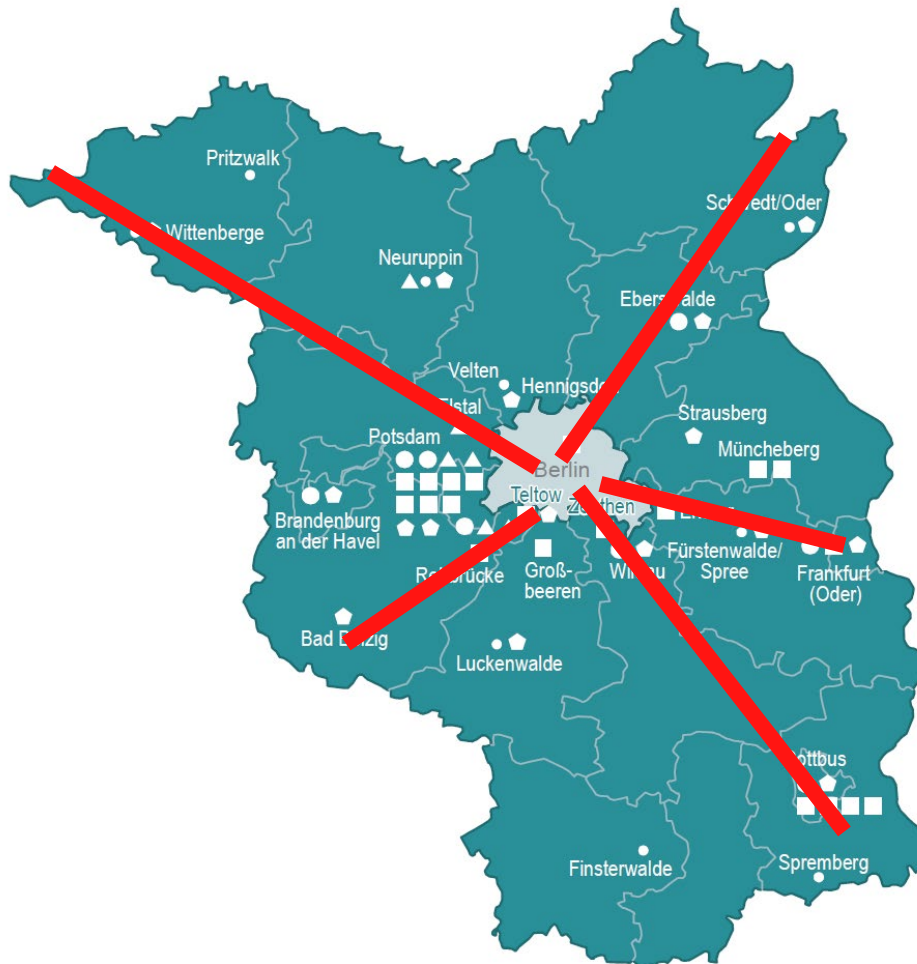
Cooperation in the Field of Spatial Development - Examples

Berlin and Berlin suburban area (cross-border – here: involving several federal states):

1. Regional Parks
2. Dialogue Forum
Airport Berlin Brandenburg
3. Axis Development
Concept Pankow-Wandlitz
4. Communal Neighborhood
Forum for Berlin-Brandenburg



Innovation axis



- Linking strategically universities and industries
- Bringing growth, knowledge to rural areas
- Opening new spaces for growth and settlements
- Linking digital and social entrepreneurs
- Making living and working in rural areas more attractive
- Keeping talents in rural areas

Thank you for your attention!

Dr. Jürgen Neumüller
Head of Division
"European Spatial Development"

Juergen.Neumueller@gl.berlin-brandenburg.de