

**Interreg Europe Peer Review:** Overview of peers and stakeholders

On 28 and 29 May, there was a Peer Review in Zeeland about biobased construction materials for construction. The results of this peer review have been compiled in a 'FINAL report' 'Bio-based Construction Materials, A Policy Learning Platform peer review 29-30 May 2024'.

Previous results of this meeting have been already published on the Interreg Europe platform: [Biobased building materials in the Province of Zeeland | Interreg Europe - Sharing solutions for better policy](#).

This two-day event has yielded a wealth of information and insights when it comes to the entire chain approach to circular-biobased construction. Both the supply (cultivation and processing) and the demand (from municipalities and housing corporations, among others) were discussed.

The overview below compiles the most relevant information from the Peers and Stakeholders. These data (background information and specialisms) come from the individual contributions (PowerPoints) that the Peers and the Stakeholders have given.

The total amount of information, the FINAL report and the data below, offer starting points for further research and (European) project development.

Richard of Bremen  
Middelburg October 2024

Who?	Where do they stand for?	Attention to?
<p>Camilla Hayselden-Ashby, Nuffield Scholar, United Kingdom</p> <p>Knowledge about agriculture/cultivation (hemp)</p>	<p>I. <a href="#">Agreena - growing a sustainable future through healthy soil</a> (carbon credits for farmers) "CO2 in the soil and plants instead of in the air"</p> <p>II. <a href="#">Agricultural Studies   Nuffield Farming Scholarships (nuffieldscholar.org)</a> (connection between farmers with industry)</p> <p><i>Knowledge about agriculture/cultivation (hemp) and its processing in combination with revenue models</i></p>	<p><a href="#">Mykor Insulation</a> (mycelium insulation – fungi Hempflax mentioned)</p> <p><i>"Change to new materials and processes starts with education and awareness. There needs to be consumer understanding of the benefits of biobased material and architects who feel sufficiently familiar to integrate it in their practice"</i></p> <p><a href="#">Home   BioYorkshire</a>  <i>The health benefits of natural materials such as breathability (creating a more comfortable living space) and the absence of inhaling harmful particles.</i></p> <p>Role in society (simple construction; role in CSR)</p>

#### Co-operative



#### Farmer-led, starting small



#### Private funding, top spec



<p>Ana Quintas, Circular Economy Expert, the Netherlands</p>	<p><a href="#">Sustenuto   Home - Sustenuto</a> (advice en ‘branding’; Brussel)</p> <p><a href="#">Sustenuto - Certified B Corporation - B Lab Global</a></p> <p>Also C2C expert; Below are suggestions from her presentation</p> <ul style="list-style-type: none"> <li>• <b>Awareness Campaigns</b> (similar to consumer campaigns, to increase market acceptance – storytelling)</li> <li>• <b>Pilot Project &amp; Consultation</b> (increase stakeholders' perception)</li> <li>• <b>Subsidies and Grants</b></li> <li>• <b>Capacity Building and Training Programmes</b></li> <li>• <b>Regulatory Support</b></li> <li>• <b>Flexible Business Models</b></li> <li>• <b>ESG framework</b> (commitments from Investors)</li> </ul>	<p>Policy:</p> <ul style="list-style-type: none"> <li>• <b>Public Procurement</b> (Provence + influence national level)</li> <li>• <b>Subsidies and Tax Incentives</b> (to drive innovation and scale)</li> <li>• <b>Certification &amp; Labelling</b></li> </ul> <p><b>Bad practices:</b></p> <ul style="list-style-type: none"> <li>• <b>Exploitation stages are underestimated</b></li> <li>• <b>Scalability of pilot projects</b></li> <li>• <b>Lack of support</b> (after the end of projects)</li> <li>• <b>Tailored features</b> (it needs to be adjusted to Zeeland building sector)</li> <li>• <b>Absence of standards and certifications to benchmark</b></li> </ul>
--	---	--

### Ana Quintas, experiences from the Netherlands and others

#### Supporting the Knowledge and Innovation Network

- Funding for Research and Development
- Creating Knowledge Hubs
- Workshops and Training Programmes
- Partnerships with Academia
- Exchange Programmes
- Demonstration Projects
- Thought Leadership



#### Improving Stakeholder Collaborati

- Public-Private Partnerships
- Collaborative Platforms
- Regular Meetings
- Communication Plan
- Influencers
- Factory Tours

#### Identifying Primary Challenges

- Cost
- Regulatory Barriers
- Limited Availability and Supply Chain constraints
- Lack of Awareness and Expertise

<p>Mihaela Frincu, INCDPC ICECHIM Calarasi Branch, Romania</p>	<p><b>Instituut Homepage – ICECHIM</b> (Chemical and Petrochemical Industry) is supervised by: <a href="#">Ministry of Research, Innovation and Digitization: <u>www.mcid.gov.ro</u></a> – MCID – <a href="#">www.mcid.gov.ro</a></p> <p><i>We are interested in:</i></p> <ul style="list-style-type: none"> <li>• Cooperation in EU/ international projects</li> <li>• Networking</li> <li>• Twinning/ training</li> <li>• Sharing experience/ good practices</li> </ul> <p>Mihaela is 'part of' a large knowledge institute from Romania, especially in the field of chemistry and circular bioeconomy/ valorisation of residues/ side streams from biomass processing.</p>	<p>Healthy living / economic benefits (self sustainable business model) Local/regional value chains Contract crops</p> <p><i>Which policy instruments can be deployed to foster construction with bio-based materials?</i></p> <ul style="list-style-type: none"> <li>• Set carbon targets for buildings</li> <li>• Set targets for reducing emissions from construction activities (biobased materials are lighter, less weight to transport)</li> <li>• % of bio-based materials in new constructions/ renovations</li> <li>• Energy performance standards in buildings</li> </ul> <ul style="list-style-type: none"> <li>➤ Evidence based data</li> <li>➤ Monitoring and data from governance based buildings</li> <li>➤ <a href="#">Biobased boulevard</a> TU Delft</li> </ul> <p>Assistance with regional plans? See <a href="#">Regions   VCG</a> (<i>With white paper on regional circular development</i>)</p>
--	---	--

Potential projects (28-6-2024)

HORIZON-MISS-2024-NEB-01-01 <https://ec.europa.eu/info/funding-tenders/opportunities/portal/screen/opportunities/topic-details/horizon-miss-2024-neb-01-01?order=DESC&pageNumber=1&pageSize=50&sortBy=relevance&keywords=construction&isExactMatch=true&status=31094501,31094502>

Circular and SSbD bio-based construction & building materials with functional properties

HORIZON-JU-CBE-2024-IA-04 <https://ec.europa.eu/info/funding-tenders/opportunities/portal/screen/opportunities/topic-details/horizon-ju-cbe-2024-ia-04?order=DESC&pageNumber=1&pageSize=50&sortBy=relevance&keywords=construction&isExactMatch=true&status=31094501,31094502>  
[EU Funding & Tenders Portal \(europa.eu\)](#) < Circular and SSbD bio-based construction & building materials with functional properties

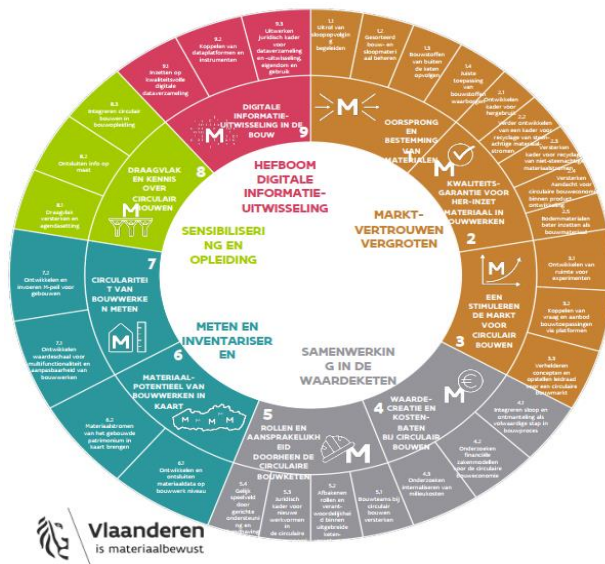
HORIZON-JU-CBE-2024-IA-04 >

See also [CBEJU-AWP-2024\\_amended.pdf \(europa.eu\)](#)

<p>Joan Romero Clausell, Valencia Institute of Building, Spain</p>	<p><a href="#">IVE   Valenciaans Instituut voor Bouw (five.es)</a> (instituut) Green procurement <a href="#">Green Guide - Generalitat Valenciana (gva.es)</a></p> <p>Database on Construction Costs: <a href="#">CONSTRUCTION COSTS   IVE (five.es)</a></p> <p>Database for procurement green guide <a href="#">Green Guide - Generalitat Valenciana (gva.es)</a></p> <p>RE10 <a href="#">IVE-product (five.es)</a> (tool for dismantling, adaptability in construction projects)</p> <p>Office Design Guide <a href="#">IVE-product (five.es)</a></p>	<p>Examples are data driven 'scientific based'</p> <p>Practical and sometimes in English</p> <p>A lot of knowledge and very interesting institute</p>
--	---	---

<p>Dominique Girolami, <a href="#">Ovam</a> (Public Waste Agency of Flanders), Belgium</p>	<p>Service <a href="#">Welcome (vlaanderen.be)</a></p> <p><i>“Today still many traditional materials are not recyclable. It should not be more difficult for Renewable Building Materials to go on the market, since their basis is already renewable”</i></p>	<p>Contacts:</p> <ul style="list-style-type: none"> <li>• <a href="#">VIBE</a>: Designing and building with a positive impact 🌱 // <a href="#">Woonder</a> (building with positive impact on nature)</li> <li>• <a href="#">Who we are   earthplantfiber.be</a> (chain coalition focussing on natural materials). If possible, both biological and technical cycle should be kept separately</li> </ul> <p><a href="#">TOTEM (vlaanderen.be)</a> Tool to optimise the Total Environmental impact of Materials, used in the design phase of a building. Instrument is comparable to environmental performance of buildings (MPG)</p>
--	--	---

Commenté [DG1]: Public Waste Agency of Flanders



**Policy program 2022-2030**

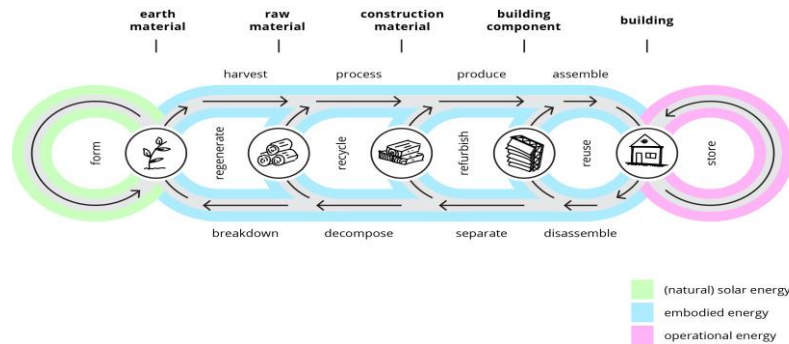
The road to circular building construction (Flanders)


- **Material management: closing material loops (Stony and non-stony materials)**
- Standard documents for circular demolition
- **Legislation about separation of Construction and demolition waste in favor of higher quality of recyclates**
- Resource Declaration ~ End of waste declaration
- Transport of waste materials
- Environmental permits
- **Reuse of materials**
- Future-oriented construction
- Tools as TOTEM, Building passport
- Supervising studies, such as **VISUM (recycling projects in building and demolition waste)**
- ...



**SAMEN MAKEN WE MORGEN MOOIER**  
**OVAM**

<p>Myron Koster</p> <p>MNEXT MATERIALEN &amp; ENERGIE X TRANSITIE</p>	<p><i>Centre of Expertise for Materials and Energy Transition</i></p> <ul style="list-style-type: none"> <li>• Biobased resources and energy</li> <li>• Biobased transitions</li> <li>• Biobased building blocks and products</li> <li>• Biobased construction</li> <li>• Marine biobased chemistry</li> </ul> <p>Mission:</p> <ul style="list-style-type: none"> <li>• Helping SMEs and governments to exploit the full potential of bio-based building materials in achieving a healthy and sustainable built environment (in permanent balance with nature).</li> </ul> <p>Approach:</p> <ul style="list-style-type: none"> <li>• Create stimulating learning/working environment for potential markets, users and future professionals; Gain knowledge and experience of (the added value and impact of) biobased building materials; Involve in the realisation and operation of demonstration projects as part of educational innovation.</li> </ul>	<p><b>Key Focus areas:</b></p> <ul style="list-style-type: none"> <li>• Health (Building Physics / Renovation)</li> <li>• Sustainability (end-of-life scenarios / lifespan / contribution to ecosystem services)</li> <li>• New construction applications (proof-of-concept)</li> </ul> <p><b>Specific interest in:</b></p> <ul style="list-style-type: none"> <li>• Mycelium</li> <li>• Biocomposites</li> <li>• Fibre crops (e.g. from agricultural and horticultural residues)</li> </ul> <p><b>Important role Knowledge institutions:</b></p> <ul style="list-style-type: none"> <li>• training next generation of professionals in the construction industry</li> <li>• also as a pioneer for technical change ('innovation agent')</li> <li>• training of the current generation of professionals in the construction sector</li> <li>• creating awareness for biobased construction</li> </ul>
---	--	---



 <p><b>Circulair bouwen Zeeland</b>          Kennis &amp; Innovatienetwerk          Derk Thijs, Nescio Midavaine</p>	<p><b>Triple helix</b></p> <ul style="list-style-type: none"> <li>• Sharing Knowledge</li> <li>• Innovative projects</li> <li>• Education, entrepreneurs and governments</li> </ul>	<p><b>Inzet</b></p> <ul style="list-style-type: none"> <li>• Measurement methodology</li> <li>• Material flows</li> <li>• Biobased materials</li> <li>• Infra</li> </ul>
---	---	--

## Knowledge sessions





### 1 MEETMETHODIEK

Aan de slag met de meetmethode van Milieuprestatie Gebouwen (MPG) en de Biobase Circulair Bouwen (BCB). Wat is dit? Hoe werkt het en hoe passen we het toe in de praktijk?

- Kennisavond meetmethode 8 februari
- Kennisavond 1 - projectbezoek 22 april
- Verdiepingssessie workshop 11 juni 2024
- Cursus MPG 1 maart 2024

**AFTRAP**  
Ontwerp naar Bouwrijke  
 Natuur op werf

---

### 2 MATERIAALSTROMEN

Het regionale aanbod van materialen is gratis aan de slag met materialen opende 2023-2024. Hoe gaat het met de materialenstromen (logistiek) en hoe ziet de materialenhub eruit en hoe wordt het gebruikt?

- Kennisavond Materialenstromen 10 mei
- Kennisavond 2 - workshop 22 juni
- Kennisavond 3 - workshop 22 juni
- Workshop 10 oktober 'Dag van de Circulair'

**3 BIOBASED**  
Biobased bouwen met  
 voorbeelden van  
 hout en natuurlijke  
 vezels van rijksoverheid  
 in verschillende  
 situaties. Zijn we  
 niet ook afhankelijk  
 en hoe langzaam  
 wordt opschaling op  
 zijn?

---

### 4 INFRA

Infra bouwt een groot verschil van het materiaalverbruik. Welke kansen liggen er binnen infra en welke initiatieven zijn er al?

- Kennisavond 24 oktober
- Kennisavond 1 - projectbezoek 23 november

**DOORKIJK 2024**  
Welke onderwerpen spelen landelijk en welke vraagstukken  
 komen er opvallend vaak voor? Welke zijn de  
 uitkomsten van de verschillende regionale werkgroepen?  
 Hoe zit het met het regionale projectplan?







<p>Fred van der Burgh</p> 	<ul style="list-style-type: none"> <li>• Project development: pilot projects and living labs</li> <li>• Active at national and European level.</li> <li>• Licensed LCA expert</li> <li>• They collaborate with education and research institutes</li> <li>• Partner of the <a href="#">CBCI-project</a> &lt; <a href="#">Circular Bio-based Construction Industry   2 Mers Seas Zeeën</a> (<a href="#">interreg2seas.eu</a>) &gt;</li> </ul>	<p><i>Europa</i></p> <ul style="list-style-type: none"> <li>• Eco-design + waste + costs</li> <li>• Construction Product Rules + environmental impact EN 15804 +A2</li> <li>• Preventing Greenwashing</li> </ul> <p><i>Nationaal:</i> Attention for LCA's (+ Frankrijk) national approach biobased construction</p> <p>Flax: Faay / Isovlas Hemp: Dunagro / Hempflex</p>
---	--	--

18-7-2024 overleg (Wageningen)

At the Venlo municipal office (start CBCI) the link was made with health at the time. That's still relevant today

Too few building physicists are called in. How does a building work? - In relation to the heating of material -

Are houses 'affordable'?

a 12 year old child died of mold - Can that be solved with attention to materials-? The healthy home? Can long-term health function als the a keyfactor?

And: shouldn't we become more aware of energy costs? (Kind of income policy?)



Are houses simply not built too big?





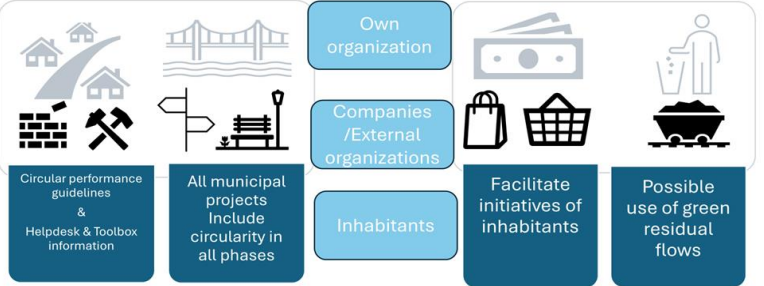
What is the story of healthy building? See e.g. relationship with nature What is biophilic design - ININTERIEURS

Zeeland: naturally healthy and pleasant!

How do you make it interesting for project developers?

*What is the Zeeland story? Exploring through a design assignment (Rotterdam, Public Administration Sept. 2024-Jan. 2025):*

<p>Saïdja de Deckere</p>  	<ul style="list-style-type: none"> <li>• <a href="#">Dashboard 2021-2024 - Sustainable Procurement Platform</a></li> <li>• <a href="#">Procura + Zeeland</a></li> </ul> <p><a href="#">SUSTAINABLE PROCUREMENT PLATFORM   Sustainable Public Procurement (sustainable-procurement.org)</a></p> <ul style="list-style-type: none"> <li>• <a href="#">Calculation module/impact measurement</a></li> <li>• Partner of the (former) <a href="#">CBCI-project &lt; Circular Bio-based Construction Industry   2 Mers Seas Zeeën (interreg2seas.eu) &gt;</a></li> </ul>	<p><i>Principles</i></p> <ul style="list-style-type: none"> <li>• Realizing Impact</li> <li>• Contribute to the realisation of the Sustainable Development Goals (SDG's) by Sustainable Development Goals – dialogues –</li> <li>• Transparent about considerations and impact for each project</li> <li>• Cooperation with the market and authorities, stimulate local economy by sourcing local suppliers and the SME's</li> </ul> <p><i>Projects</i></p> <p>Field Station Groot-Saeftinge Smart Shared Cars and charging station</p>
--	--	---

 <p>Saïtia Comenencia</p>	<p><b>Circular economy policy plan for the Zeeland region</b>          OZO KEM: Consultation          Zeeland Governments Climate, Energy and Environment</p> <ul style="list-style-type: none"> <li>• 13 municipalities</li> <li>• Province of Zeeland</li> <li>• Practical and execution-oriented</li> <li>• Connected to RES</li> <li>• Coordinated with O.L.A.Z</li> </ul> <p><b>O.L.A.Z: Public Entity Waste Disposal Zeeland</b></p> <p>Long-term goal is the same as the National Circular Economy Program</p> <ul style="list-style-type: none"> <li>○ Collaboration and guidance by Circularities</li> </ul>	<p><b>Specific objectives about Biobased Materials on 4 different subjects **:</b></p> <ol style="list-style-type: none"> <li>1. Construction &amp; Built Environment;</li> <li>2. Infrastructure &amp; Public Space;</li> <li>3. Purchasing and consumption;</li> <li>4. Waste and Raw Materials.</li> </ol> <p><i>** Reminder! Policy and objectives are still in the draft phase. Therefore it has been decided to present them in broad terms.</i></p> <div data-bbox="840 550 1601 917"> <p style="text-align: center;">Specific objectives about Biobased materials (4);   </p>  </div>
--	---	--