



JAMOR

Eixo verde e azul

*Green and Blue Axis*



1. Starting point
  - a. Urban territory
  - b. Population
2. Urban Rehabilitation Strategy
  - a. Municipal's nature based solutions
  - b. ARU (urban rehabilitation area)
  - c. Intermunicipal project
3. Project's principles
  - a. The project
  - b. Phasing
  - c. Investment
  - d. Results
4. Next steps
  - a. Green Bridge
  - b. Retention Basin
  - c. Forcadas Outeiro Rehabilitation
  - d. Parque Florestal da Serra da Carregueira Rehabilitation
  - e. Matinha de Queluz Rehabilitation
  - f. Rehabilitation of Queluz National Palace Yard

## City Policy

- Centrality
- Identity
- Attractiveness of economic activities
- Recreation areas
- Requalification of public space

## Environmental Policy

- Requalification of public space
- Resilience of natural systems
- Urban decompression areas
- Ecosystem services

# Municipal Policy

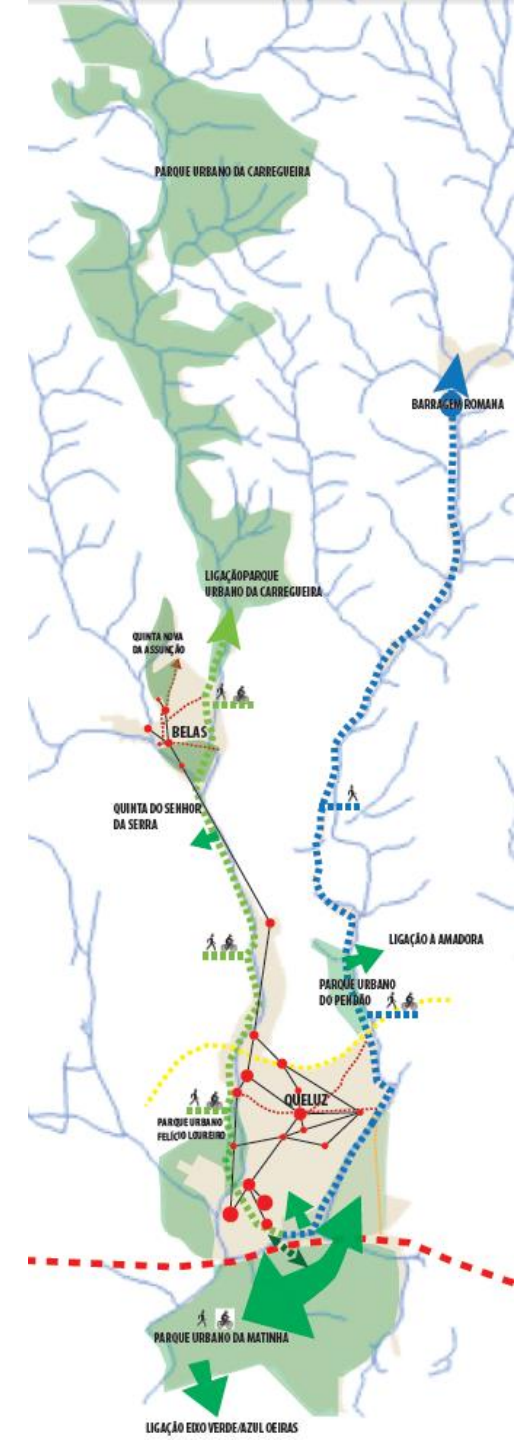


Revitalization of the city center and village, on the rehabilitation of public spaces, the enhancement of free areas and rehabilitation of the building.

The enhancement of the Jamor River, a linear, pedestrian and cycling link, as a link between the two villages (Queluz-Belas) and as a strategic intervention to improve the quality of urban space.

The qualification of public space will enhance Queluz and the village of Belas, enhancing synergies that induce local economic dynamism and creating social and cultural vitality.

The requalification of streams as a natural space becomes a potential for integration into urban space and contributes to the improvement of the population's quality of life.

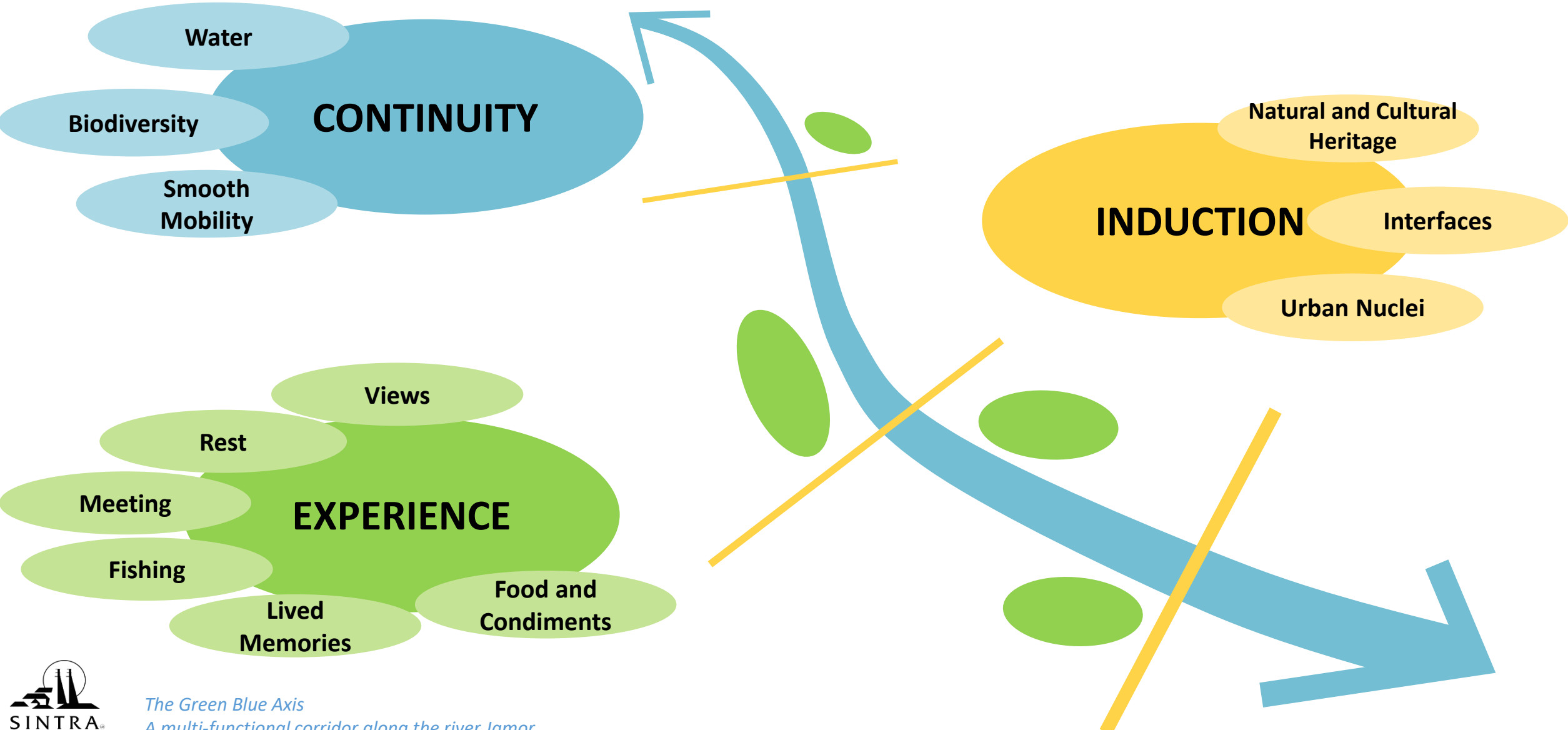


# Demography and built park

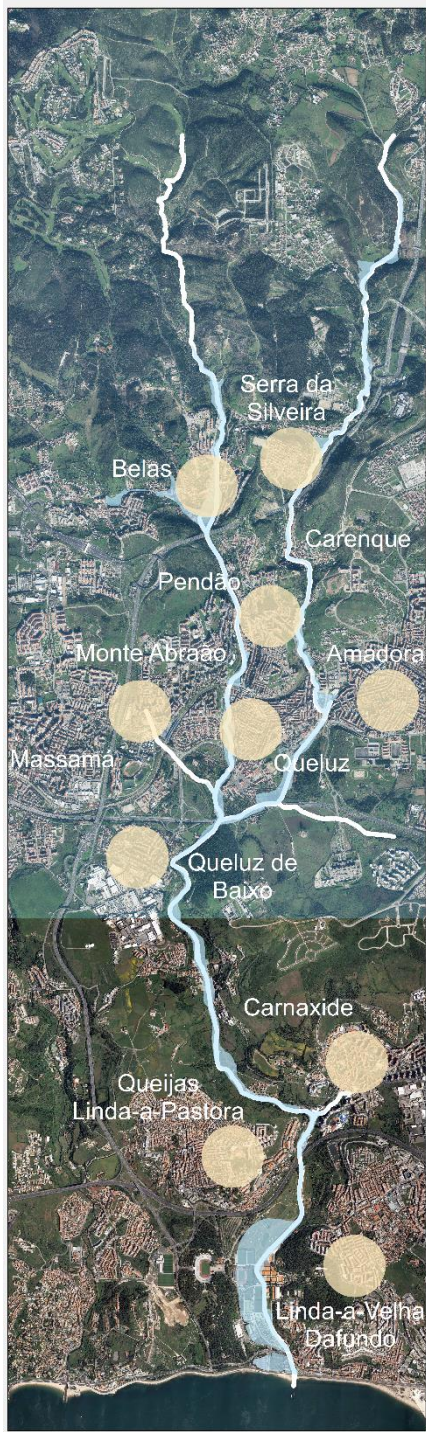
Individuals Residents	Queluz City (incl. Belas)	Sintra Municipality
2021	100.218	385.606



# Essential Concepts of the Proposal:



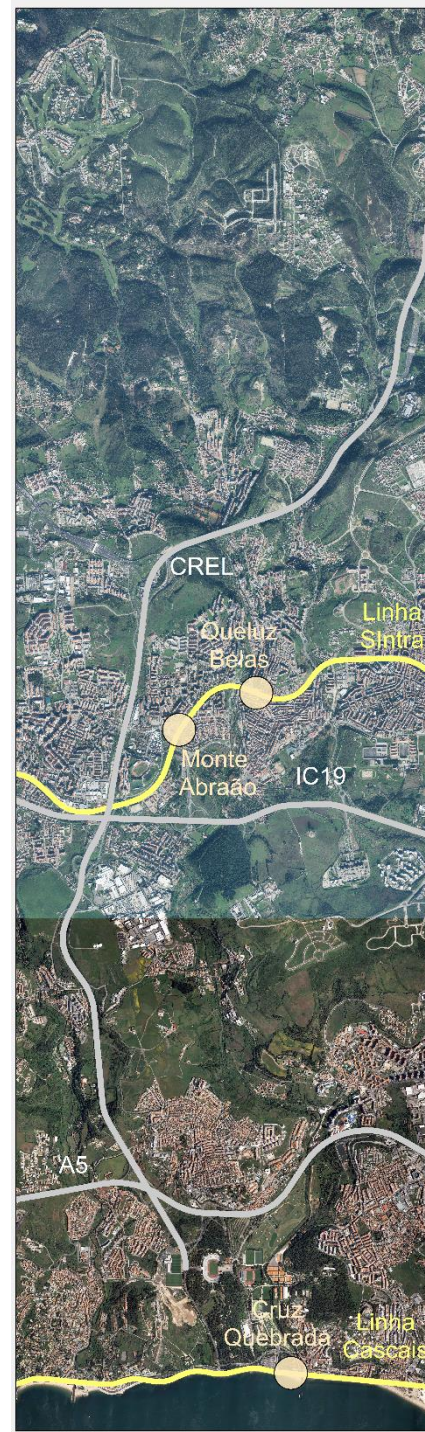
# HIDROGRAPHY



# MUNICIPALITIES



# FREEWAYS AND RAILROADS





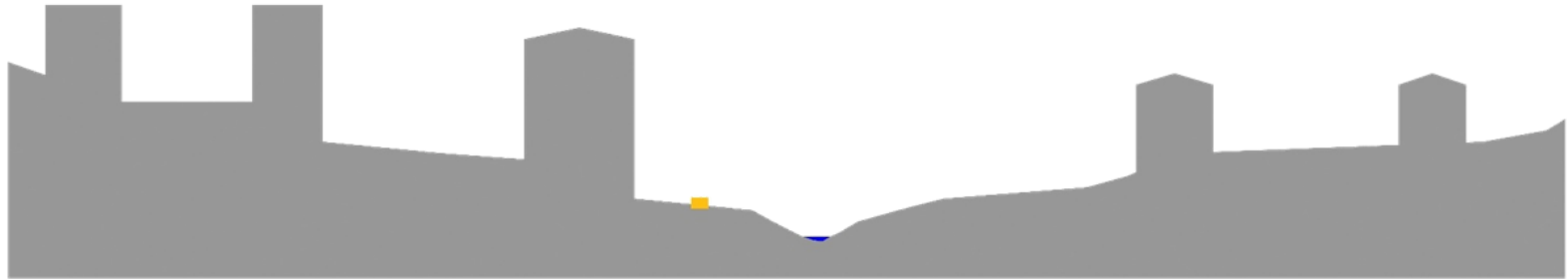
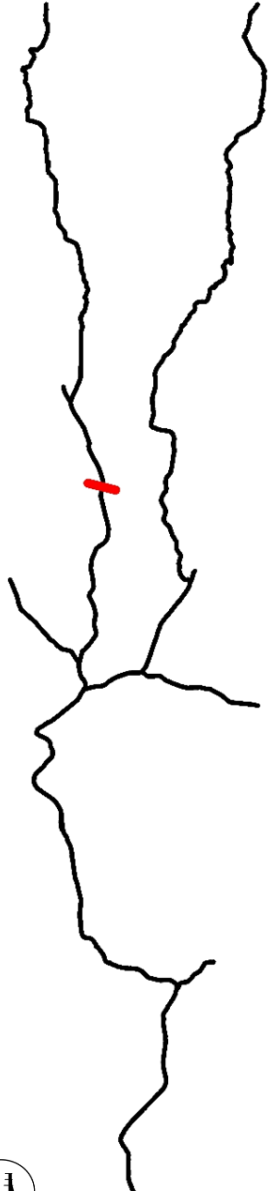
*The Green Blue Axis  
A multi-functional corridor along the river Jamor*







*The Green Blue Axis  
A multi-functional corridor along the river Jamor*

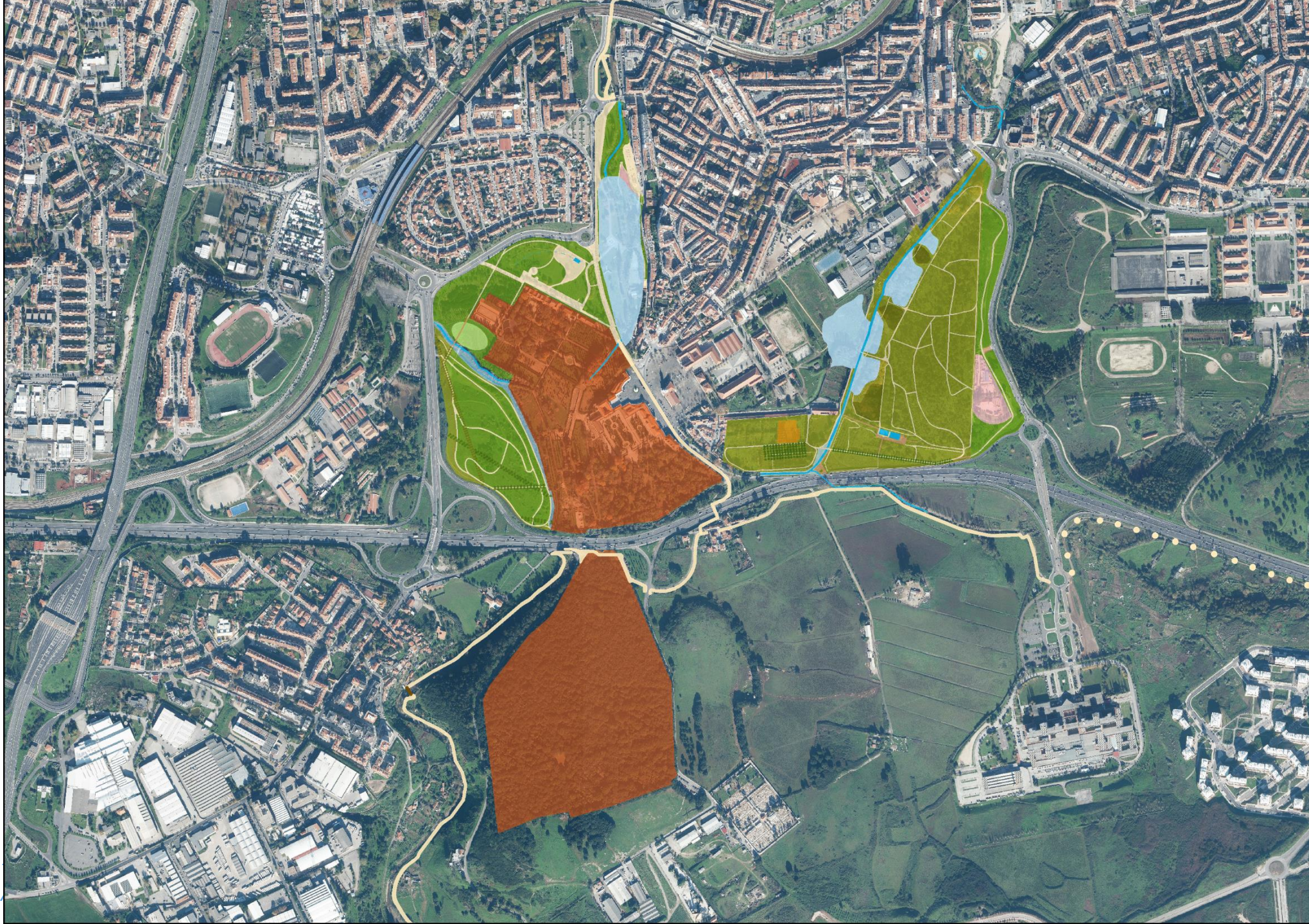














## New green spaces (ha):

Existing	New	Total
<b>50,3</b>	<b>43,4</b>	<b>93,7</b>

86% increase in green area equipped and formally open to the public, surrounding the Queluz Nacional Palace

# STRUCTURING PROJECTS

## LANDSCAPE AND ENVIRONMENTAL ENHANCEMENT OF JAMOR RIVER

### New routes (ml):

Sintra	Oeiras	total
<b>4.800</b>	<b>6.600</b>	<b>11.400</b>

### Treated water lines (ml):

Sintra	Oeiras	total
<b>3.300</b>	<b>6.800</b>	<b>10.100</b>

(Note: Oeiras, includes Sports Complex of Jamor)

# Green bridge





JAMOR

Eixo verde e azul

*Green and Blue Axis*