

**Interreg  
Europe**



Co-funded by  
the European Union

## PROXIMITIES

# Urban-rural linkages in the Regional Spatial and Economic Strategy for the Southern Region

**Eoin O'Connor**

*(Acting) Senior Executive Planner, Southern Regional Assembly*  
[eoconnor@southernassembly.ie](mailto:eoconnor@southernassembly.ie)

14 November 2024 | Ireland

# Southern Regional Assembly



Who we are



Overview

Regional Tier of Government  
1.8m people  
10 Local Authorities



Functions



# NPF, RSES and Balanced Regional Growth



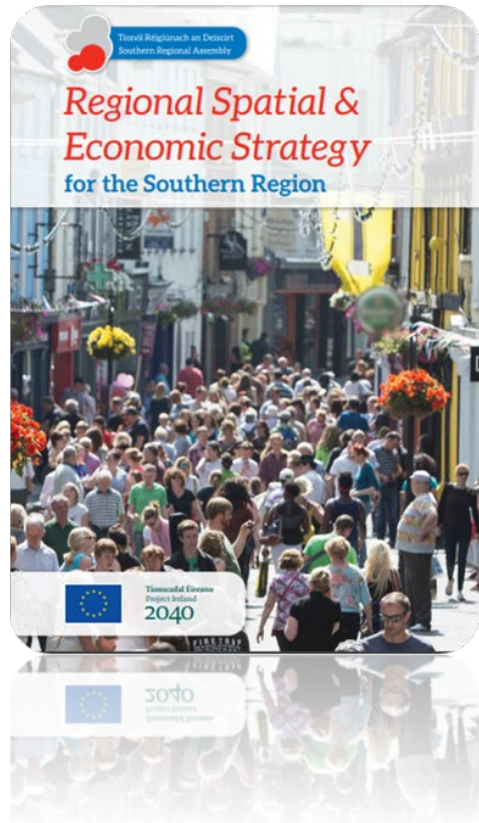
“We need to manage more balanced growth between these three regions because at the moment Dublin, and to a lesser extent the wider Eastern and Midland area, has witnessed an overconcentration of population, homes and jobs.

We cannot let this continue unchecked and so our aim is to see a roughly 50:50 distribution of growth between the Eastern and Midland region, and the Southern and Northern and Western regions, with 75% of the growth to be outside of Dublin and its suburbs.”

Table 10.1 | National Planning Framework Phased Population Growth

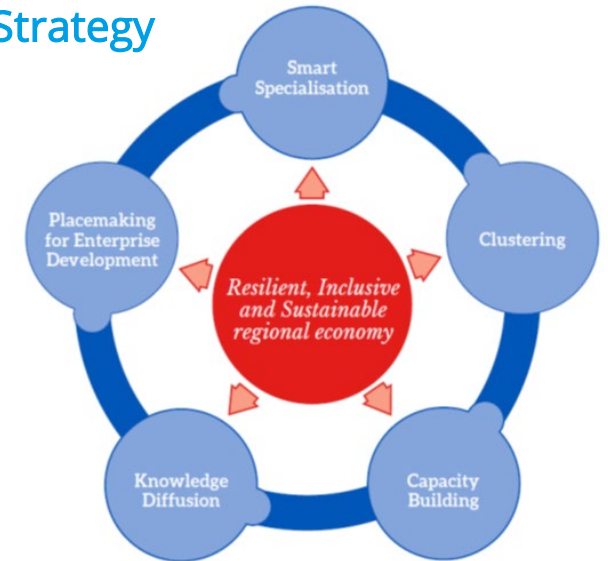
Region	2030 Growth	%	2040 Growth	%
EMRA	270,000	49%	470,000	49%
NWRA	85,000	15%	150,000	15%
SRA	195,000	35%	330,000	35%
State Growth	555,000		950,000	
State Total Population	5,700,00		6,100,000	

# Regional Spatial and Economic Strategy



Vision

Economic Strategy



Economic Drivers

# Transformational Change and compact growth

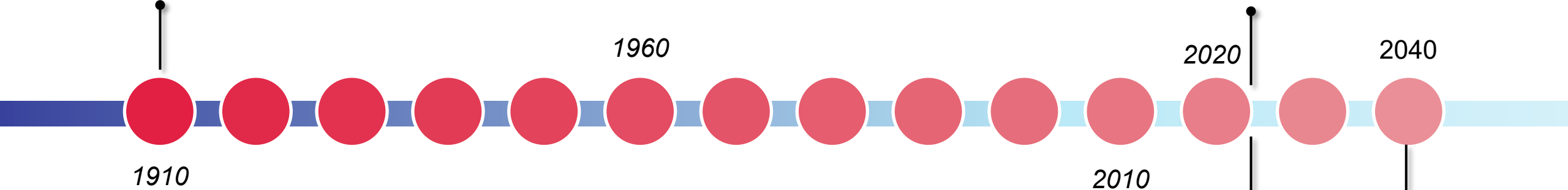


**1911 Waterford City**

👤👤👤 27,464

**2022 Waterford City**

👤👤👤 60,079 (↑ 32,615)



Waterford MASP  
👤👤👤 65,559

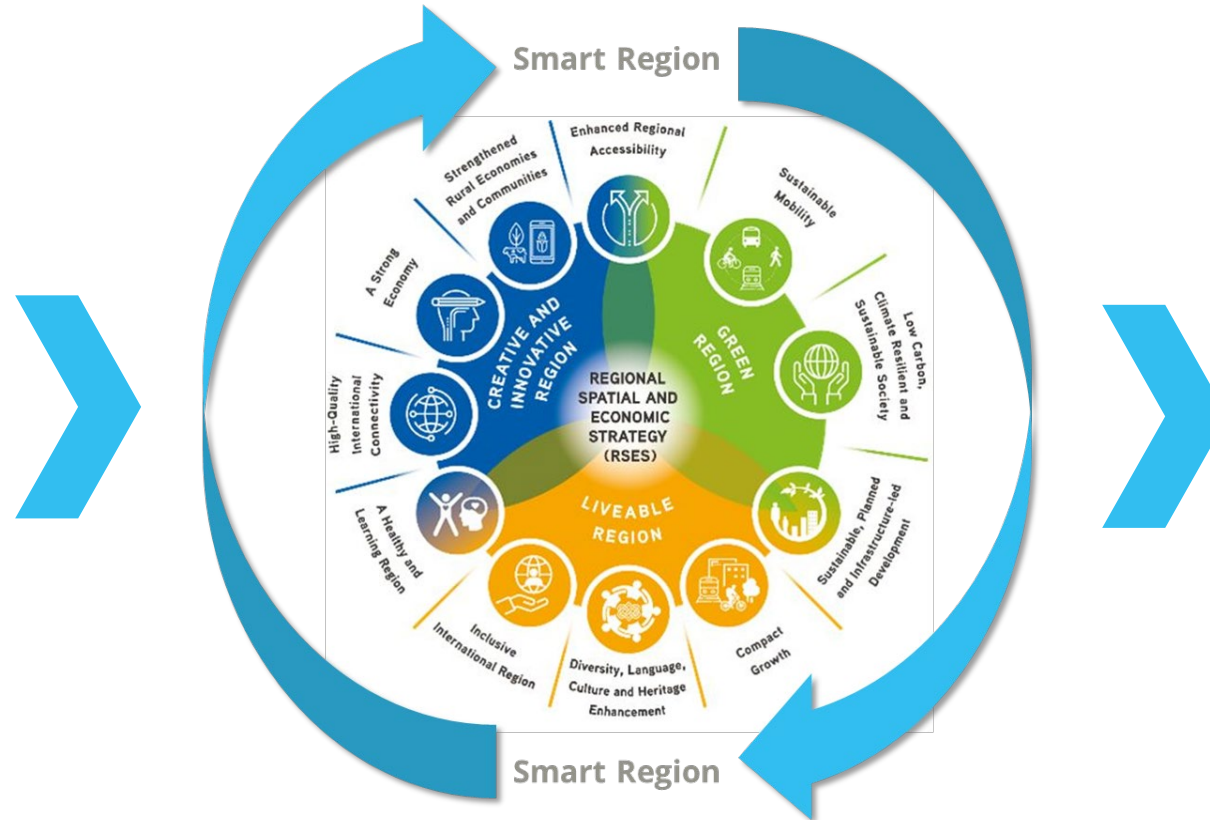
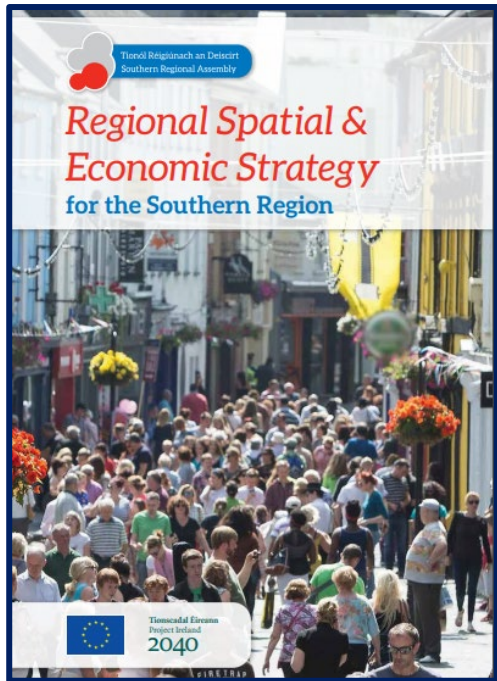
Waterford MASP  
🎯 81,769

↑ 16,210



18 Years

# RSES Implementation in meeting regional challenges



Regeneration and Placemaking



Sustainable Mobility



Blue Green Infrastructure and Nature Based Solutions



Towards a Learning Region

# Regional Development Monitor

[Home](#)[Our People and Places](#)[Our Green & Sustainable Future](#)[Our Region's Economy](#)[Our All-Island Perspective](#)[More ▾](#)

## Regional Development Monitor

Informing and Monitoring the implementation of the 3 Regional Spatial and Economic Strategies (RSES)



Tionól Reigiúnach Oirthir agus Lár-Tíre  
Eastern and Midland Regional Assembly



Northern & Western  
Regional Assembly



Tionól Réigiúnach an Deiscirt  
Southern Regional Assembly

The **Regional Development Monitor (RDM) Hub** is a collaborative project between the three Regional Assemblies in Ireland, the All-Island Research Observatory (AIRO) at Maynooth University and spatial infrastructure partners the Ordnance Survey Ireland (OSI) via the GeoHive platform.

# Thank you!

[www.interregeurope.eu/PROXIMITIES](http://www.interregeurope.eu/PROXIMITIES)