

Islands – testbeds for innovation?

Online event, 9 December 2024



Luc Schmerber & Mart Veliste
Thematic Experts for a Smarter Europe
Interreg Europe Policy Learning Platform



<https://app.sli.do/event/aN6d26oMpgKr1gjCvcaBde>

Agenda

Welcome & Introduction

Luc Schmerber, Interreg Europe Policy Learning Platform

13.15 **Session 1 – Strategic approaches to innovation and entrepreneurship**

- 14.15
- Innovation challenges in outermost regions – Innovation strategy of the Azores
Fábio AL. Vieira, Autonomous Region of the Azores (Portugal)
 - S3 strategy of Malta
Sarah Mifsud Attard, XjenzaMalta
-

14.30 **Session 2 – Innovation and entrepreneurship practices**

- 15.30
- Innofest and Lab Vlieland, Friesland (Netherlands)
Dennis Sieperda, Province of Fryslân (Islands of Innovation, Digital Islands)
 - Innovation Lab and Business Lab Åland (Finland)
Anna-Lena Groos, Åland University of applied sciences (Digital Islands)
 - TERINOV Science and Technology Park, Azores (Portugal)
Duarte Pimentel, TERINOV Science and Technology Park
-

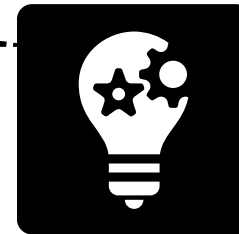
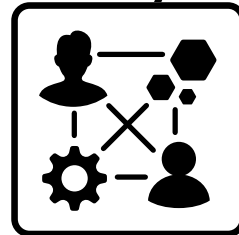
15.30 **Wrap up & Conclusions**

15.45

The platform in a **NUTSHELL**

Policy-learning opportunities through access to:

People
Meet our community



Knowledge
Find policy solutions



Expertise
Get policy advice

www.interregeurope.eu/policylearning

Peer learning **IN PRACTICE**

📍 **89 peer reviews** implemented since 2019
15 peer reviews in the pipeline

📍 **51 matchmaking** sessions

Apply to benefit from expert support any time

<https://www.interregeurope.eu/get-policy-advice>



The platform **TEAM**



Marc Pattinson



Arnault Morisson



Luc
Schmerber



Erik
Gløersen



Katharina
Krell



Simon Hunkin



Rene
Tønnesen



Laura Varisco



Mart
Veliste



Astrid Severin



Magda Michalíková



Thorsten
Kohlisch



Elena Ferrario



Karine Gevorgyan



Mario Vade pied



Valentine
Dufaye



Lotte van Meijel



Vladimir Sestovic



Antoine
Duquennoy



SMART



GREEN



CONNECTED



SOCIAL



CITIZENS



GOVERNANCE

Context

Study **Islands of the European Union: State of play and future challenges** (EU Parliament, 2021)

- Islands' challenges largely stem from geographic isolation and physical discontinuity with the continent
- Shipping goods and transporting people to and from islands is often more expensive than on the mainland, raising the cost of living and of doing business.
- Dependence on tourism, which can be highly seasonal and sensitive to external shocks such as economic downturns or pandemics.
- Smaller populations mean limited local markets, which can limit the growth potential of businesses and make it more difficult to attract investment.
- Many islands rely on limited natural resources such as fresh water, arable land and energy, which can increase vulnerability to supply disruptions.
- Young and educated people often leave for better opportunities elsewhere, reducing the local talent pool and weakening the workforce.
- Infrastructure can be costly to maintain and upgrade, from roads and ports to energy grids and water systems.

Interreg Europe projects




2014 - 2020

Islands of Innovation
Innovation Policies for Sustainable European Islands

Closed

Research and innovation capacities





2014 - 2020

GROW RUP
Entrepreneurship development and capacity building policies for business creation and growth in outermost regions

Closed

SME competitiveness





Digital Islands
Digital Islands aims at developing digital solutions to empower island communities.

Ongoing

Digitisation

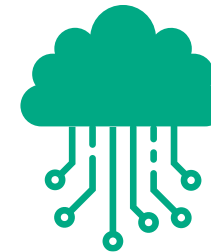
Peer review: Fostering innovation capacities and integrating disadvantaged groups in Åland

▶ Government of Åland, Finland

Peers from: Belgium, Hungary, Ireland, Norway, United Kingdom

Recommendations

- SME competitiveness and innovation capacity in an island context
- University-based entrepreneurship
- Innovation lab



Peer review – Development of Smart Island and Smart Tourism Strategies

► Korčula, Croatia

Peers from: Estonia, Finland, Norway

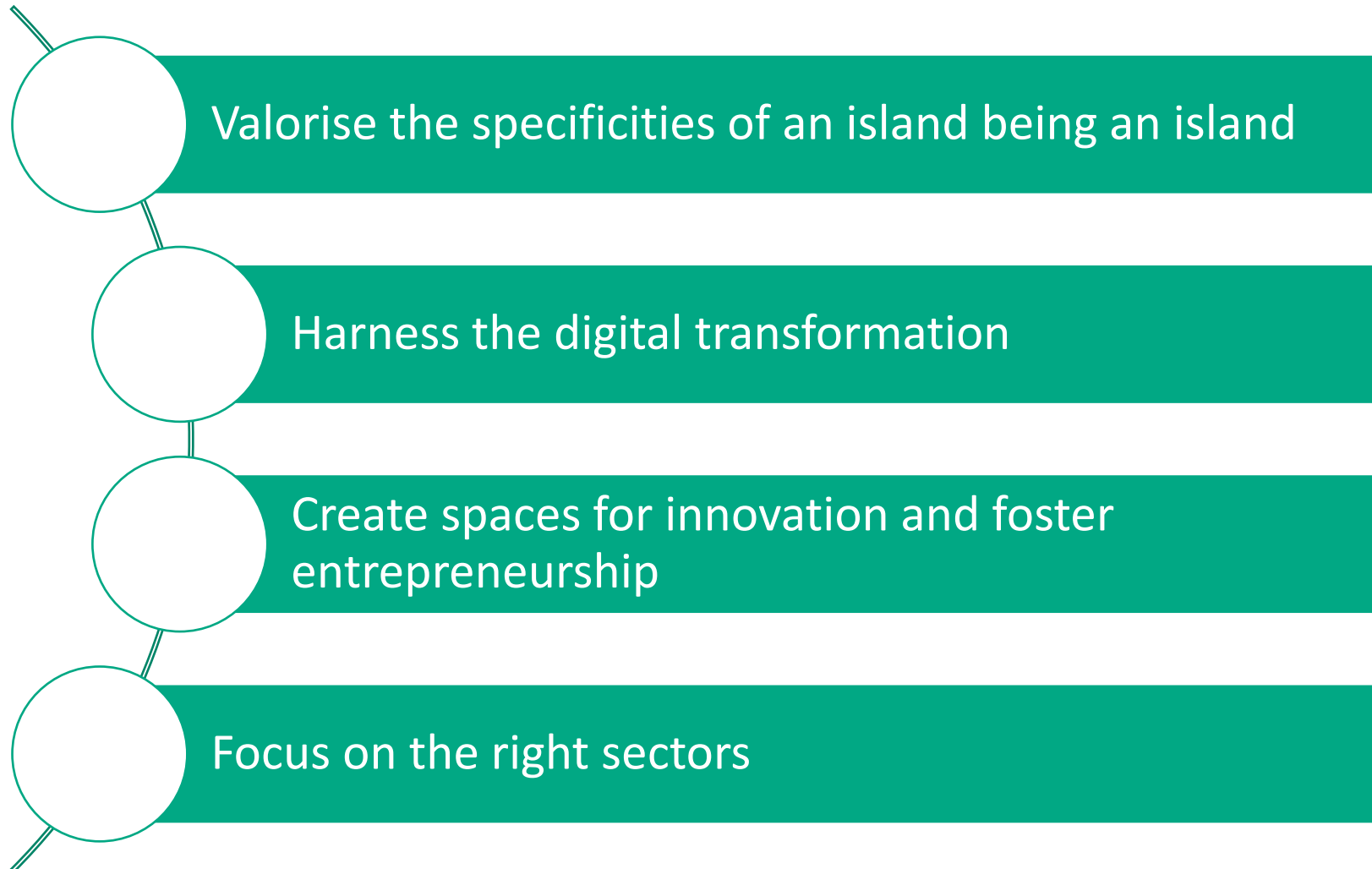
Recommendations

- Attracting digital nomads
- Incubator
- Testbed for startups
- 48h Hackathon

More information available [here](#)



Exploring different approaches



Session 1 – Strategic approaches to innovation and entrepreneurship

Fábio AL. Vieira, Autonomous Region of the Azores (Portugal)

Sarah Mifsud Attard, XjenzaMalta (Malta)

Session 2 – Innovation and entrepreneurship practices

Dennis Sieperda, Province of Fryslân (Netherlands)

Anna-Lena Groos, Åland University of applied sciences (Finland)

Duarte Pimentel, TERINOV Science and Technology Park (Portugal)

**Interreg
Europe**



Co-funded by
the European Union

Thank you!

Follow us on social media:     



Title of Event
Location