

**Interreg
Europe**



Co-funded by
the European Union

RIWET

New governance for rivers to counteract floods

David Campos
Fundació Limne
recursos@limne.org

Sales Tomàs
Fundació Limne
limne@limne.org

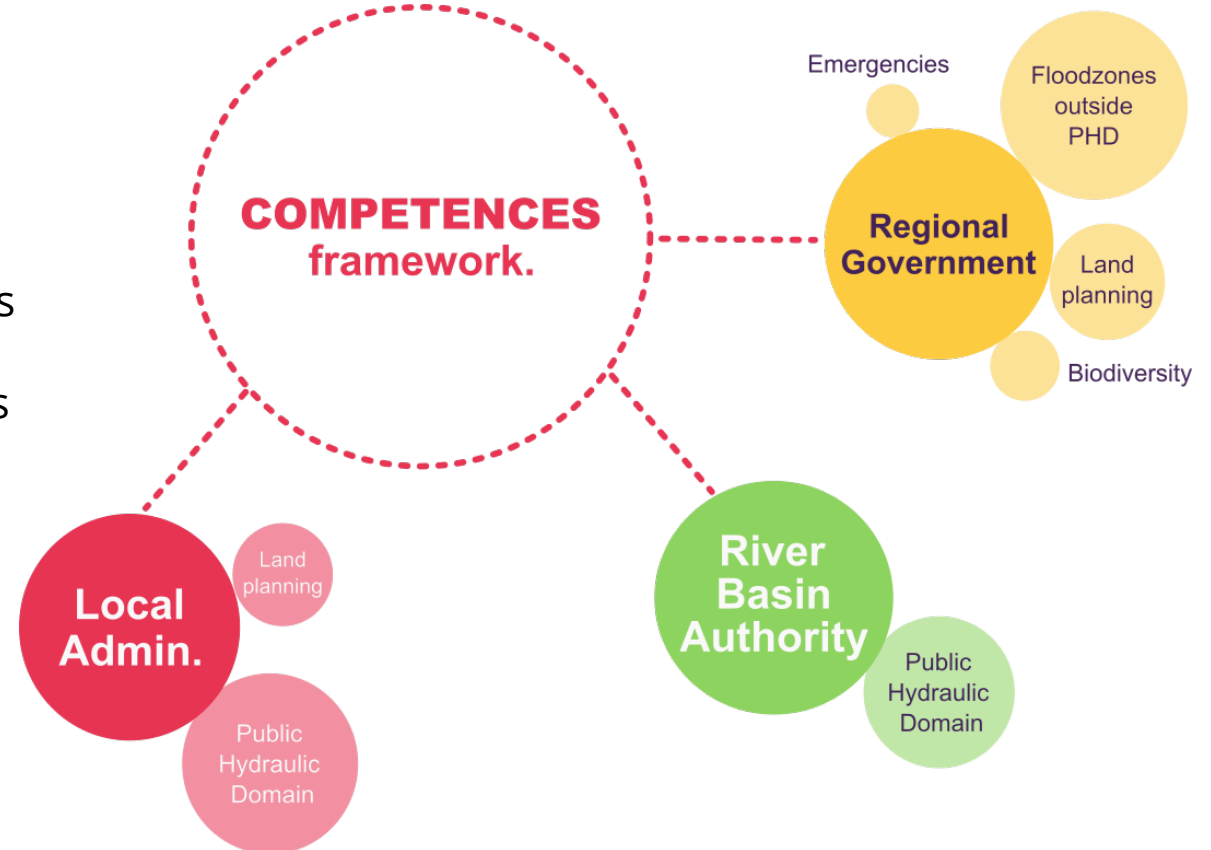
26 FEBRUARY 2025 | Murcia

Current governance structures for our area

A complex competence framework

Water governance in Spain falls within what we know as the **Public Hydraulic Domain**, meaning that rivers are publicly owned and managed by River Basin Authorities under the National Government.

However, a complex **division of powers** and an **overlapping of competences** emerge.

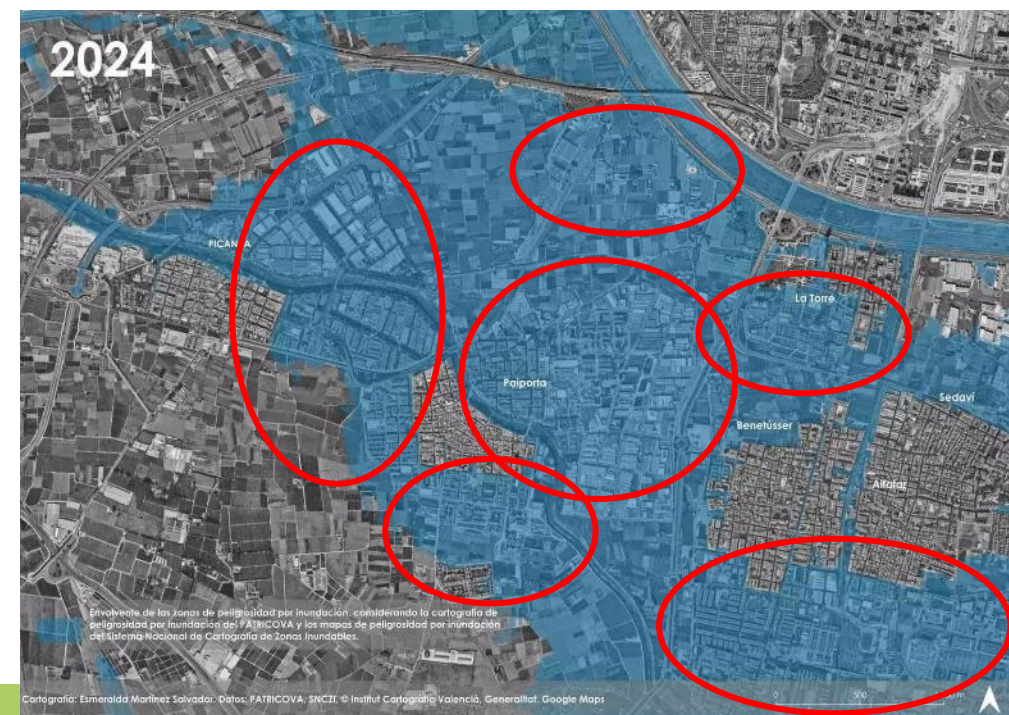


Who is in charge of our rivers?

“The powers for actions in rivers located in urban areas correspond to the administrations with competences in urban planning.”

(National Hydrological Plan)

This duality or increase in powers has often been the source of some problems and may have led to **discrepancies between local administrations and the River Basin Authority**, mainly due to the lack of knowledge of that local competences.



DANA* | October'24

>230 people died
78 municipalities affected

The Consorcio de Compensación de Seguros (Insurance Compensation Consortium - CCS) reported receiving more than **239,128 claims**, with more than **78,078 for residential dwellings** and more than **140,240 for motor vehicles** (As 30/01/2025)

CCS estimates it will cover 90–95% of the claims in the region for **EUR 3.5 billion**, with the remaining EUR 250-300 million incurred by primary insurers.

(*) *Acronym for Isolated Depression at High Levels in Spanish.*

Image:
https://i.guim.co.uk/img/media/c3b8a446eadd25ee0f07f671b3c1225461d5dcda/0_0_2784_4176/master/2784.jpg



DANA* | October'24

>230 people died
78 municipalities affected

Are we on the right track?

Are we coping under that extremity?

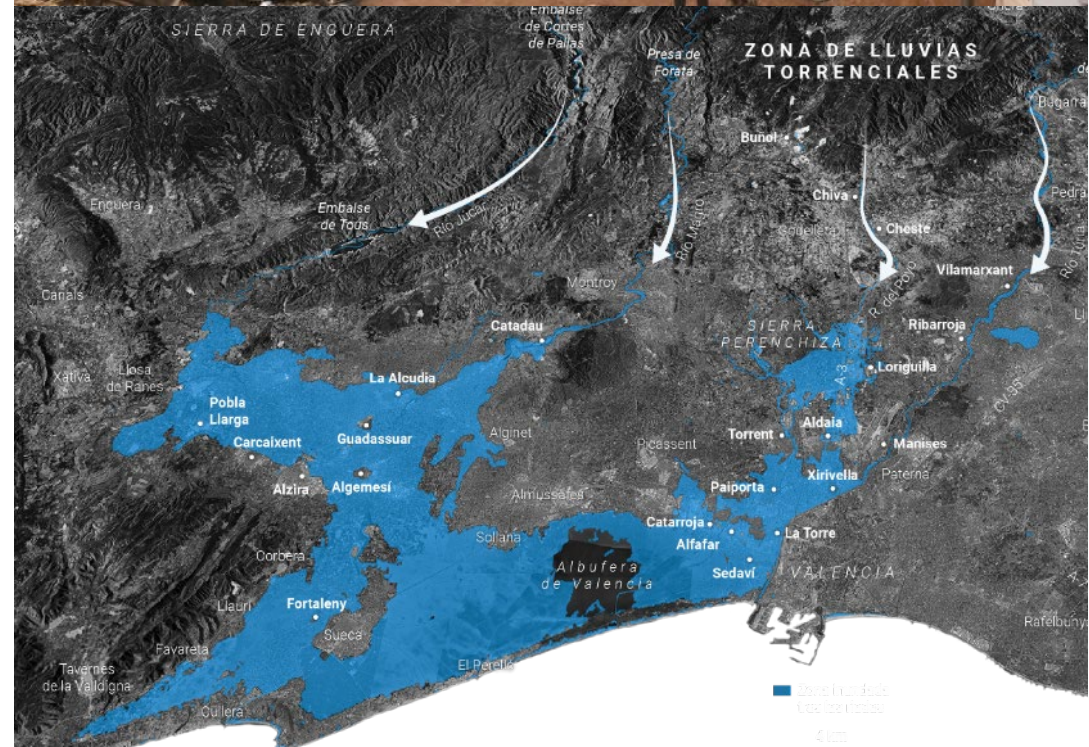
How can we adapt to this growing flood risk?

Are we transitioning, and if so, how and for what purpose?

Rivers need a free of obstacles floodplain.

Water governance must be holistic and needs to be improved in order to better coordinate national, regional and local policies.

(*) *Acronym for Isolated Depression at High Levels in Spanish.*



Images:

<https://ichef.bbci.co.uk/images/ic/1024x576/p0k1cy2l.jpg>

https://css2.rtve.es/css/rtve.contenidos/infografias-svg/2024/octubre/dana-valencia/1/vista_satelite_valencia_byn.png

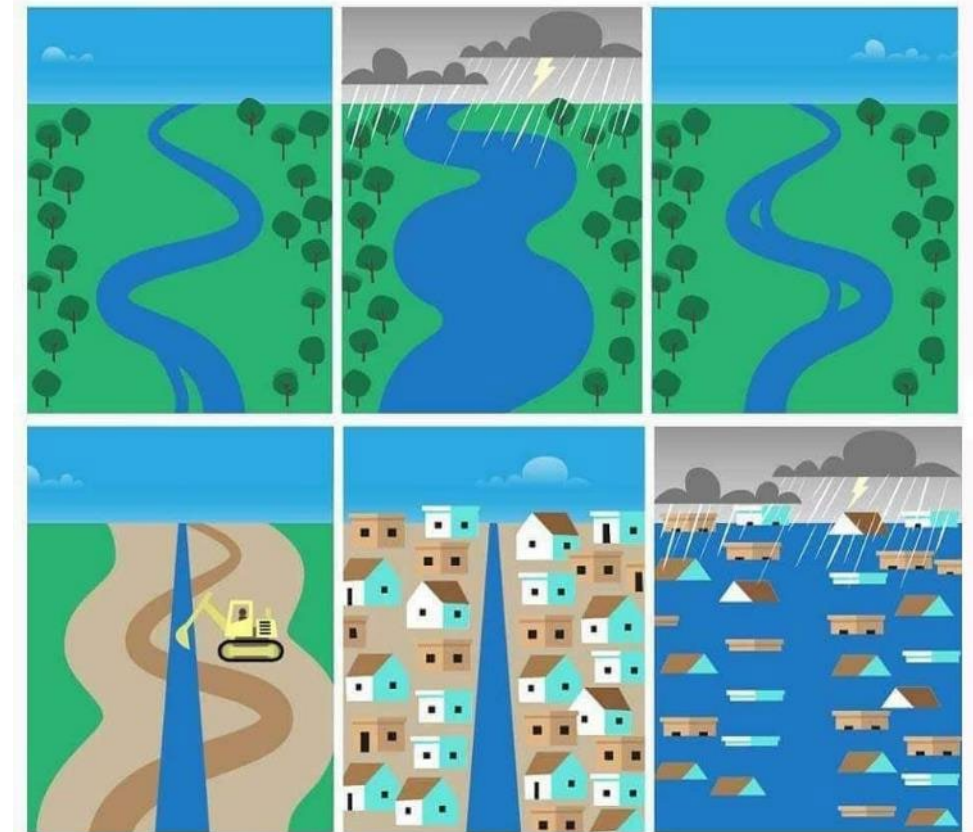
The main challenges with current governance / land use structures

A change is needed

The observations from the DANA indicate that a necessary transformation of the water governance model is needed.

This transformation should include several improvements:

- Enhancing the **strength** of public administration
- Improving the **coordination** of sectoral policies
- Increasing **coherence** between the different administrative levels
- Improving the generation of **information and knowledge**
- Increasing **transparency**
- Promoting **cooperation and co-responsibility** of citizens and social agents

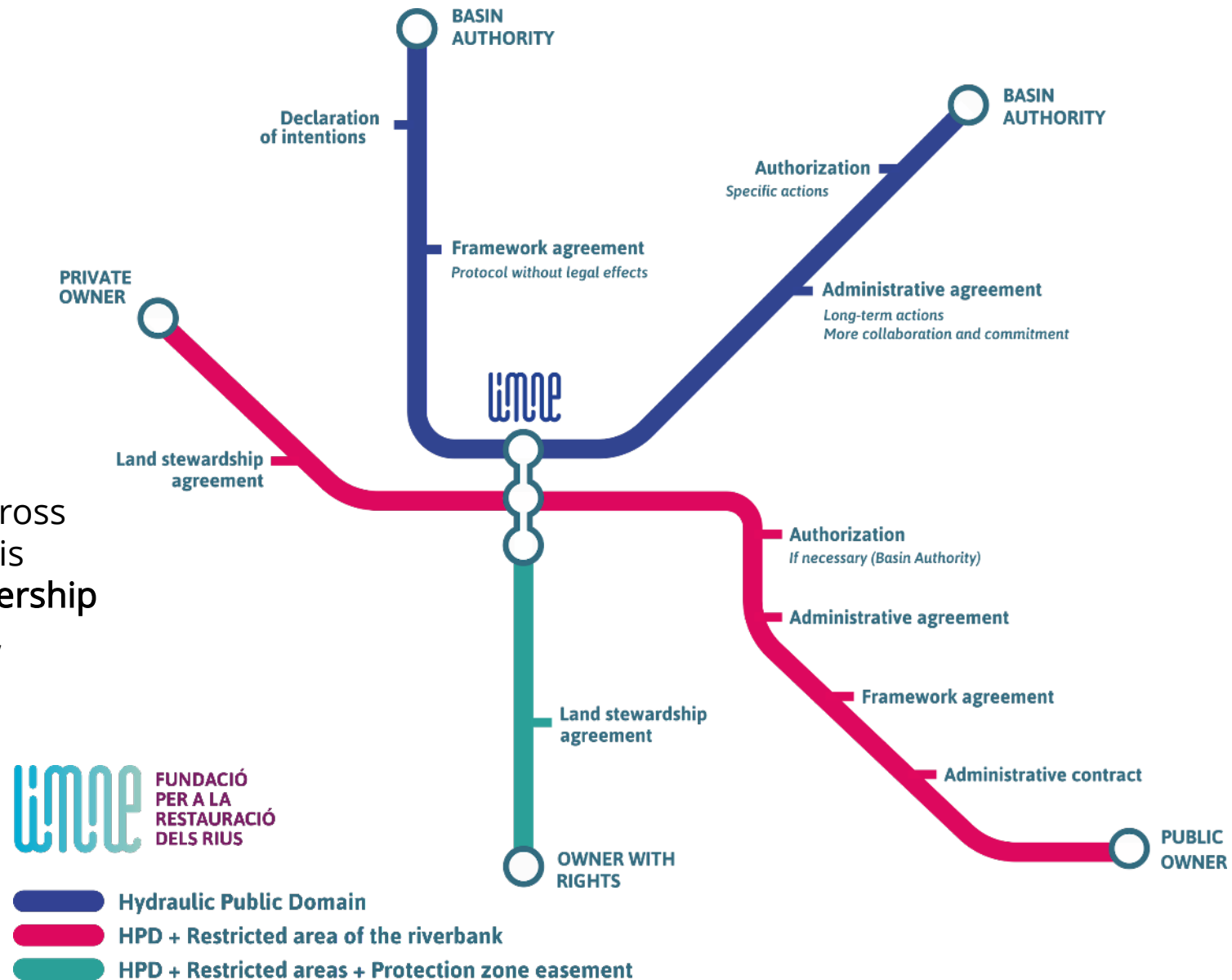


Source: <https://www.chj.es/es-es/medioambiente/Paginas/Obras-de-conservaci%C3%B3n-y-mejora-ambiental-de-cauces-ejecutadas-por-la-CHJ.aspx>

Fluvial stewardship

Land management technique supported by Spanish Law 42/2007

Land stewardship has various connotations across the world, but the common underlying theme is caring for a piece of land regardless of its ownership taking into consideration ecological, economic, social, and cultural dimensions.



A bond between people & rivers

LIMNE was born with the sole aim of promoting a better conservation and restoration of water bodies.

People and rivers are interdependent and need each other to thrive.

Partnerships / Collaborations → Fluvial stewardship



One step forward

Basin-wide approach

We are advocating for a basin-wide approach to **river water management**.

Although this approach exists with regard to national responsibilities, it **fails at the local level**.

Collaboration & shared goals between municipalities is essential.

Mechanisms must be established to encourage **shared management** not only between municipalities themselves but also with regional and national administrations.



Conclusions

Climate change is not the main root of our water problems.

We need a new approach to land planning and water governance

Better coordination between administrations

Empowering civil society through fluvial stewardship.

Supporting municipalities to work together, with a basin-wide vision → help them to better manage their land use, with the river (and its flood plain) at the center of their urban planning & environmental policies.



Thank you!

www.interregeurope.eu/RIWET