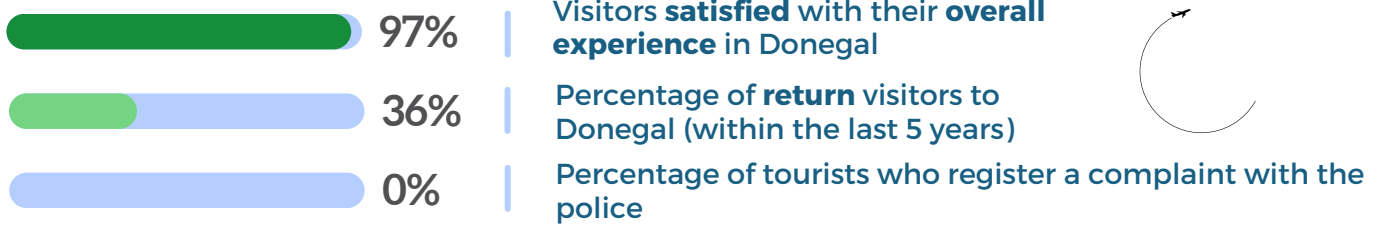


DONEGAL SUSTAINABLE TOURISM DASHBOARD

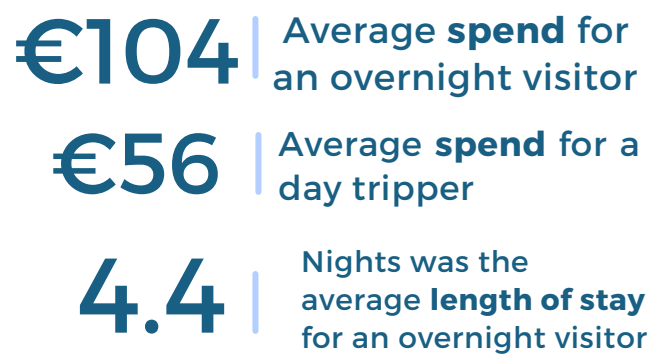
Evidence based destination planning

Visitor Indicator results (2018)

DB



ECONOMIC SUSTAINABILITY

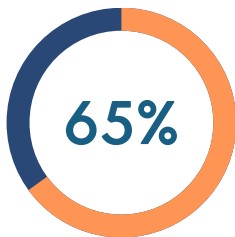


234,332 Number of tourist nights per month

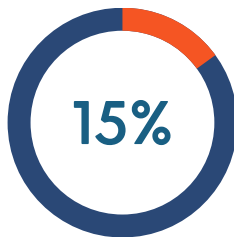
30,833 Number of same day visitors per month



TRANSPORTATION



Percentage of tourists and same day visitors using different modes of transport to arrive at the destination



Percentage of tourists and same day visitors using local public transport to get around the destination

1,815 Average travel (km) by tourists and same day visitors from home to the destination

CLIMATE CHANGE- MEASURING AND MONITORING VISITOR CARBON FOOTPRINTS

550 kgCO₂

Average carbon footprint of international tourists and same day visitors travelling from home to Donegal (return trip)

316 kgCO₂

Average carbon footprint of all tourists and same day visitors travelling from home to Donegal (return trip)



SUSTAINABLE TOURISM DASHBOARD

Evidence based destination planning

Resident Indicator Results (2018)



74% Percent of residents who are satisfied with tourism in the destination (per month/season)



8%

Direct tourism employment as percentage of total employment in Donegal



81%

of Residents agree that they have **reasonable access** to the **natural and cultural sites** in the destination



79%

of Residents believe that tourism has a **positive effect** on the **distinctiveness and local identity, culture and heritage** in the destination



48%

Percentage of the Donegal's events that are focused on traditional/local culture and heritage

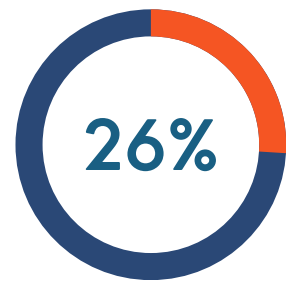


IMPACTS OF TOURISM TO RESIDENT'S QUALITY OF LIFE MEASURING AND MONITORING



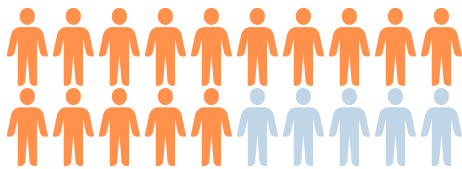
18.4

Number of second homes per 100 homes in Donegal (ETIS Indicator C.1.4)



26%

Percentage of jobs in tourism that are seasonal in Donegal



There were 380 tourists per 100 residents in Donegal



Waste production per tourist night compared to general population waste production per person (kilos)

0.37 kg Donegal resident

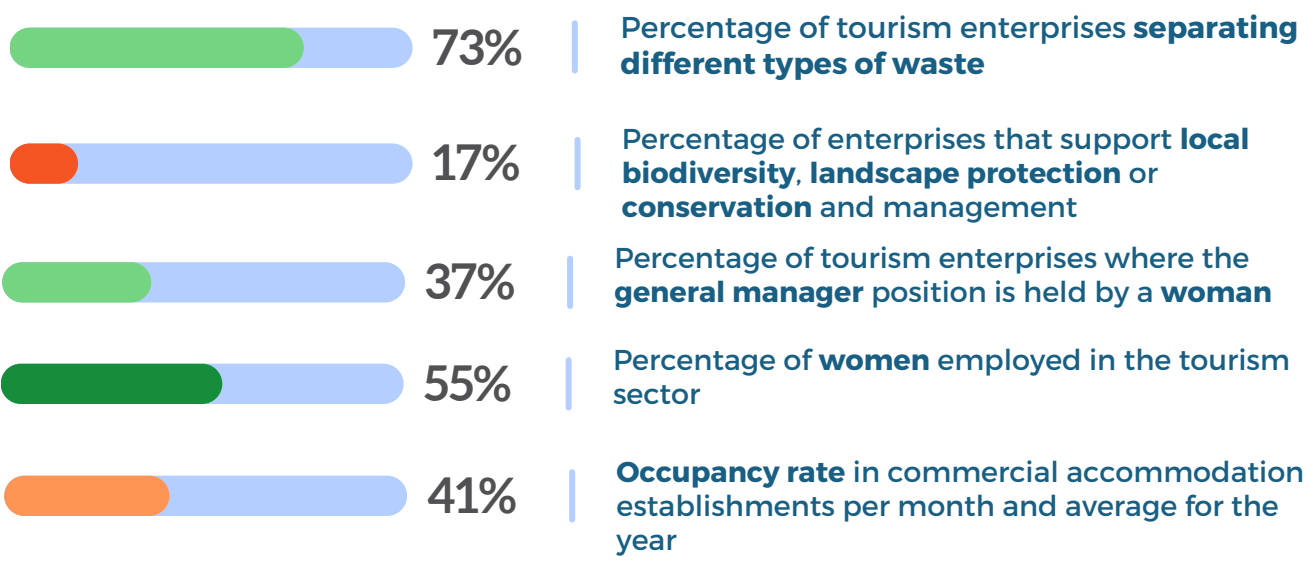
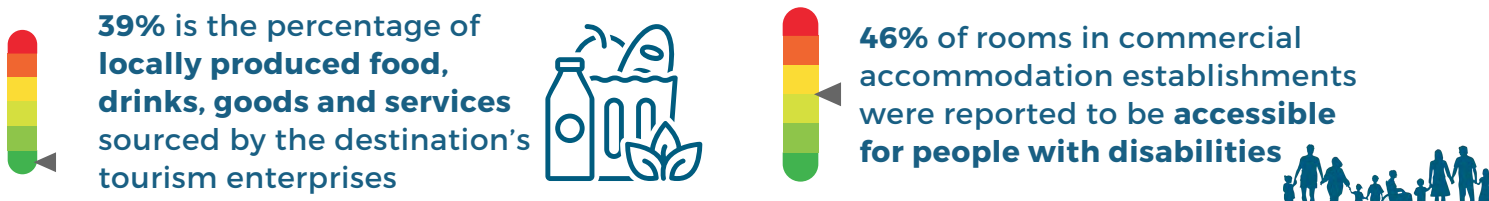
0.77 kg Visitor to Donegal



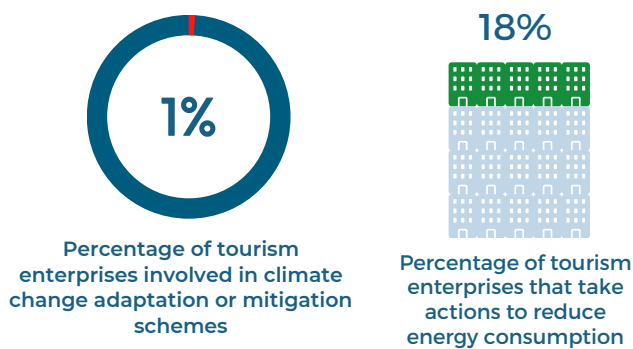
SUSTAINABLE TOURISM DASHBOARD

Evidence based destination planning

Donegal Enterprise Indicator Results (2018)



Climate change



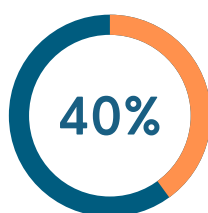
Water management



4.4% (N)

Relative contribution of tourism to the destination's economy (% GDP)

(ETIS indicator B.1.3, National figure)



Percentage of tourism enterprises in Donegal using a voluntary certification for sustainability measures

